



KALGOORLIE-BOULDER LANDCARE NEWS



Better Environment
Better Lifestyle

Winter Newsletter - July 2007 Volume 12 Issue 46

This newsletter is produced quarterly by the **Kalgoorlie-Boulder Urban Landcare Group (KBULG)**.
Contact the **Landcare Office** on phone: **9091 6233**, enquiries@kbulg.org.au,
www.kbulg.org.au or **Lotteries House**, corner Wilson & MacDonald Streets, Kalgoorlie.

What's inside...

Great Australian Nightstalks	Waterwise Garden Competition Entry Form
Waterwise Gardening Tips	Junior Landcare Treeplanting
FREE Membership	Natural Power
KBULG Happenings	KBULG Coming Events
Weed Competition	Carbon Neutral
WasteWise Quiz	Kerbside Recycling

WATERWISE GARDEN COMPETITION

Total Prizes: \$1200 in Waldecks Kalgoorlie vouchers plus a trailer load of mulch for each category winner!

Enter NOW—Nomination form on Page 3!!!
Entries close 7 September 2007

Clean up your front garden and road verge, put on the mulch, and be in the running for all the cool prizes.

You don't have to be a garden guru to enter!

The competition will favour gardens with waterwise plants, weed free verges and mulch, including coarse garden clippings, compost and gravel as well as paved areas.

Gardens will also be judged on overall appearance, colour, layout and tidiness.

We are looking for waterwise gardens which are suitable to our semi-arid climatic conditions but are also attractive, well maintained and aesthetically pleasing.



COMMUNITY TREE PLANTING DAY SATURDAY 21ST JULY 2007



Put on your tree planting clothes, sturdy shoes, gloves, sunscreen and a hat, grab a trowel and head down to...

DWYER STREET DAM

**Saturday 21 July 2007
10.00 am – Noon**

Join in Kalgoorlie-Boulder's Annual Community Tree Planting Day and do your bit for our environment.

Special Guest Korker Roo!

Prizes awarded on the day!

Free drink & sausage sizzle for all participants!

There will also be a Corporate and Community Group Challenge (with prizes) for groups with the most participants, best costumes & best tree planting chant.

For more information contact KBULG to receive a Registration Form and return it in to the KBULG Office before 14 July 2007.

NATIVE PLANTS CLEARANCE SALE 1 Day only!

KBULG has some leftover native plants for sale, including flowering shrubs and groundcovers suitable for growing in a Goldfields garden.

All must be sold. Bargains to be had! Stock is very limited. No pre-sales.



Sale on Sunday 5th of August 2-4 pm at the Shadehouse in Karlkurla Park.

Email us and register to get a list of plants available. List emailed out several days before the sale.

KBULG - Better environment, better lifestyle communicate, educate, participate



KBULG HAPPENINGS



Kalgoorlie Soroptimists in Karlkurla Park: For the last 4 years, as part of their Clean-up Australia Day efforts, the Kalgoorlie Soroptimists have targeted the weed *Citrullus lanatus*, commonly known as "pie or paddy melon", which was taking over several areas in Karlkurla Park.

These ladies have proved that persistence and perseverance pays off, with the amount of this weed in the park reducing significantly. Thankyou.

Junior Landcare Schools Tidy Day in May: A number of schools participated in Schools Tidy Day in May. These included the kindy and pre-primary school children from Kalgoorlie Primary School who 'put the rubbish to bed' in their pyjamas. Schools Tidy Day reminds students of the importance of not littering and looking after our environment.



Scout Camp—Seed Balls: The 1st Boulder Scouts had a great time producing seed balls at their camp on the 5th & 6th May.

They combined clay, compost and local native seeds with water to produce small round balls, which were then allowed to dry.

These seed balls, will be scattered around the community in areas that need revegetating. When it rains the balls 'melt' allowing the seeds to grow.

Native Plant Group: The Native Plant Group have been very busy at the shadehouse, with over 16,000 plants growing for projects, including a number of different types of *Eremophila*.

The group is always looking for plant pots, so please contact us if you have some to give away.

FREE KBULG MEMBERSHIP

NAME:.....
 ADDRESS:.....
POSTCODE:.....
 PHONE:..... FAX:.....
 EMAIL:.....

MEMBERSHIP CATEGORY (please tick one):
 Individual Junior (under 18) Family
 Business \$100 (Business Membership price includes GST)
 (Membership 1st July—30th June & renewed annually)

Projects you are interested in being involved with:

<input type="checkbox"/> Community Tree Planting Days	<input type="checkbox"/> Junior Landcare
<input type="checkbox"/> Regeneration Zones	<input type="checkbox"/> Recycling
<input type="checkbox"/> Busy bees on weekends	<input type="checkbox"/> Displays and promotions
<input type="checkbox"/> Gardening with native plants	<input type="checkbox"/> Bushwalks
<input type="checkbox"/> Other (please specify)	<input type="checkbox"/> Nightstalks
<input type="checkbox"/> Please contact me. I'm interested in volunteering.	

PLEASE FILL IN & SEND TO:
 KALGOORLIE-BOULDER URBAN LANDCARE GROUP. PO Box 10381, Kalgoorlie WA 6430

COMING EVENTS!

- **Community Tree Planting**
Saturday 21st of July, 10am—noon.
- **KBULG AGM**
Friday 3rd August 2007
- **KBULG Native Plant Clearance Sale**
Sunday 5th August 2-4 pm at the Karlkurla Park Shadehouse. Bring a box.
- **Keep Australia Beautiful Week**
27th August to 2nd September 2007
- **Native Plant Group**
Sunday 2nd of September at the KBULG Shadehouse
- **Waterwise Garden Competition**
Entries close Friday 7th September 2007
- **KBULG Committee Meeting**
Friday the 7th September 9am at Lotteries House
- **Great Australian Nightstalks**
September 17 & 21st 2007

Contact the KBULG office if you would like to receive more information on any of the above events.

CARBON NEUTRAL

Climate change is a serious problem affecting all of us. Our current carbon dioxide emission levels are causing global warming and are unsustainable for the planet.

Going carbon neutral is an easy way that we can all contribute to a solution by taking responsibility for the carbon dioxide emissions we create with our cars, airplanes and energy use. While this might seem like a big responsibility, it's easier than you might think.

Carbon Neutral is a programme aimed at improving the environment, and is run by the not-for-profit group Men of the Trees. Visit the website at www.carbonneutral.com.au to calculate your personal carbon emissions. The only information you need to provide is the number of kilometres you traveled by car and by air and your average electricity and gas bills for the year.

On average an Australian city dweller contributes 13 tonnes of greenhouse gas per year, requiring approximately 78 trees to be planted to nullify the impact on the environment and absorb this carbon dioxide over a period of 30 years.

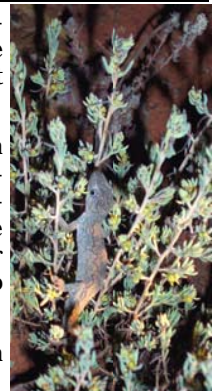
As the number of trees required to offset 1 tonne of carbon dioxide will vary from site to site, the 'trees to offset' figures are approximate and are based on an average of 6 trees to offset 1 tonne.

GREAT AUSTRALIAN NIGHTSTALK

KBULG will again be giving Goldfields residents the chance to see the native wildlife what lurks around Kalgoorlie-Boulder at night.

We will be organising free Nightstalks on the evenings of the 11th and 14th of September 2007. If you are interested in coming along, please contact the office before 4th September 2007 to register and for more information. Numbers are limited so get in quick!

On the night you will need to bring a torch and make sure you dress in warm clothing.



WATERWISE GARDEN COMPETITION

WATERWISE GARDEN COMPETITION

Entry Form

NAME:.....

ADDRESS:.....

PHONE:.....

COMPETITION CATEGORY (please tick one):

Residential - Owner maintained Tenant maintained

Professionally landscaped

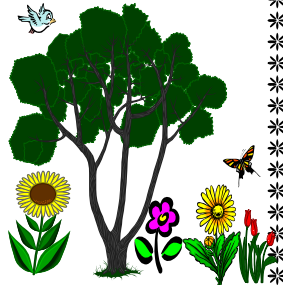
Commercial/Industrial - Small Owner maintained

Large—Professionally landscaped

Community - Schools, Childcare Centres, Retirement homes

Does the nominee object to publicity if chosen as a finalist? Yes / No

Is there any aspect of your garden of which the judges should be aware?



Feel free to add an additional page if required.

.....

CLOSING DATE: Friday 7th September 2007

Entries to be sent to: Kalgoorlie-Boulder Urban Landcare Group, PO Box 10381 Kalgoorlie WA 6433 or faxed to 9091 6211 or emailed to: enquiries@kbulg.org.au

Gardens will be judged within 2 weeks of the closing date. Only front gardens as seen from the verge will be judged. Entrants do not need to be home for the judging.

\$1200 worth of Waldecks vouchers to be won, and the winners of each category will win a trailer load of mulch donated by the Water Corporation .

NATURAL POWER

Everyone can help the environment by signing up to 100% Natural Power, which is green energy not resulting in any greenhouse gas emissions.

You can find out more by visiting: www.synergyenergy.com.au/Residential_Segment/Green_Energy/NaturalPower.html

The site also features a Natural Power calculator which can be used to estimate how much more natural power will cost you.

FREE TREES FOR STREET PLANTING!

Free trees for street planting can be obtained from the Council. The trees are native to the Goldfields region.

To obtain free trees contact Carol Smith at the City of Kalgoorlie-Boulder Offices on 9021 9680.

WATERWISE QUIZ

How Much Do YOU Know?

Do you know?

On a per person basis, Australia is 2nd highest producer of waste in the world. (~800 kg/person/year)

- The amount of waste placed in landfill each year is...
 - decreasing every year
 - enough to cover the state of Victoria
 - not enough to cover the state of denial
- In WA, waste production is...
 - lower than the national average
 - above the national average
 - similar to the national average
- On average, all Australian capital cities will reach their present landfill capacity by 2050, True or False?
- How many tones of recycled paper saves approximately 13 trees, 2.5 barrels of oil, 4100kWh of electricity, 4 cubic meters of landfill and 31,789 litres of water?
 - 13 tonnes
 - 1 tonne
 - 7 tones
- The energy saved by recycling 5 glass bottles would light a 100W globe for about how long?
 - 1 hour
 - 20 hours
 - 8 hours
- The energy saved by recycling 1 aluminium can would power a TV for how many hours?
 - 3 hours
 - 1 hour
 - 10 hours
- Twenty aluminium cans can be recycled with the same energy required to produce how many new cans from raw materials?
 - 19
 - 1
 - 6
- What percentage of household waste going to landfill is organic matter?
 - 10%
 - 30%
 - 44%
- 17,000 tones of PET was recycled in Australia last year—that's over 425 million PET soft drink bottles. PET bottles can be recycled into...
 - PET bottles only
 - PET bottles, sleeping bag stuffing, warm clothing and lingerie
 - Other types of plastic
- Which state had the highest per capita litter count in a recent study?
 - WA
 - NSW
 - Victoria

WasteWise Quiz Answers: 1. B and increasing each year, 2. B - 1.7 tonnes per year (2000), 3. False - will reach capacity by 2010! 4. B, 5. B, 6. A, 7. B, 8. C, 9. B, 10. A

WEED COMPETITION

KBULG and the City of Kalgoorlie-Boulder Weed Competition was another success.

Just over 850kgs of weeds were collected by participants from all around Kalgoorlie-Boulder. An awesome effort from all who took part.

This year we gave a flat cash reward of 50 cents per kilo of Caltrop, with category winners receiving an additional \$100 cash prize money.



All participants also received KBULG plant vouchers.

Winners, remember to redeem these at the KBULG Plant Sale on August the 5th.

Thank you to everyone involved in the day.

Category/Winner	Weed weight	Place
<u>Business</u> Dept of Environment & Conservation Dept of Industry & Resources	117kg 80kg	1st 2nd
<u>Community/ School Group</u> 1st Boulder Scout Group Goldfields Out of School Care O'Connor Education Support Centre	171kg 32kg 19kg	1st 2nd 3rd
<u>Family</u> Williams Family Fanetti Family Kirke Family	204kg 49kg 40kg	1st 2nd 3rd
<u>Adult Individual</u> Megan Byfield	50kg	1st
<u>Child Individual</u> Chelsea Hailey Rebecca Kuhne Jessica Fanetti Liam Delaney Sarah Mazzucchelli Niamh Delaney	38kg 27kg 13kg 6kg 4kg 2kg	1st 2nd 3rd 4th 5th 6th



WATERWISE GARDEN TIPS

Careful Watering can save Thousands of Litres in the Garden:

Here are a few simple steps you can take:

Water early in the morning: The best time to water your garden is early in the morning so that plants are charged with water during the growth time for photosynthesis during daylight hours. During winter you can easily cut your watering to one per week and if it has been wet not water at all for a week. *Remember there is a state wide ban on watering using sprinklers between 9am to 6pm during the day and you can only water on your two designated watering days.*

Water at the base of the plants: If you need to hand water, aim at the base of the plants so water is absorbed directly by the roots. Also consider replacing micro sprays with drippers that feed directly to the roots.

Apply a soil wetting agent: These break down your soil's water resistance and allow more water to permeate to the roots.

Choose waterwise plants and plant them in hydro zones: Choose local area plants that have developed their water saving adaptations to store water or growth hibernation during extreme weather periods. Your local waterwise nursery have a good range of local native species and waterwise plants suitable for Goldfields conditions.

Mulch your garden: Mulching not only makes your garden look great, it also reduces evaporation from the soil surface by as much as 70%. Spread your mulch to a minimum thickness of 75mm (3 inches) and leave at least 50mm breathing space around the base of the plant.

For more information on waterwise plant species and garden practices visit www.watercorporation.com.au

KERBSIDE RECYCLING

The first Monday of the first week of July marked a very special day for Kalgoorlie-Boulder, with the first pickups of the new kerbside recycling service. The City of Kalgoorlie-Boulder has listened to the community and their requests for a more sustainable waste management program and finally responded with this important step.

However... It is now up to every household in the community to use this service correctly.

Please read your calendar and follow the instructions carefully. Only place items which may be recycled in your new bin, and make sure they are rinsed! I know many of you are wondering "what we have to rinse" but just take a second to imagine this scenario and I think you will understand.

A can of cat or dog food, not rinsed put inside a hot plastic bin with little ventilation, which then sits there for a month. In this month the tin gets all festy and starts 'growing' stuff. Now ask yourself, do you want to open the bin, let alone touch that can? Would you like to be the person in the recycling plant sorting that mess by hand. NO. Plus it's a OH&S hazard.

Contaminated recycling is not safe for people to sort. This is why a proportion of recycling sometimes goes to landfill. Recycle carefully and rinse your recycling Please! If you need help or clarification, just ring and ask.

For more details on any of the articles in this newsletter or to find out more about the Kalgoorlie-Boulder Urban Landcare Group, call or visit the Landcare Office located in Lotteries House (corner Wilson and MacDonald Streets, Kalgoorlie).

Phone: 9091 6233 or 0418 935 498 www.kbulg.org.au enquiries@kbulg.org.au