



# Annual Report **2016—2017**



KALGOORLIE-BOULDER  
URBAN LANDCARE GROUP INC

ABN: 72-037-460-472

KALGOORLIE WA 6430

PO Box 8133, KALGOORLIE WA 6430

Ph: 0418 935 498

Email: [admin@kbulg.org.au](mailto:admin@kbulg.org.au)

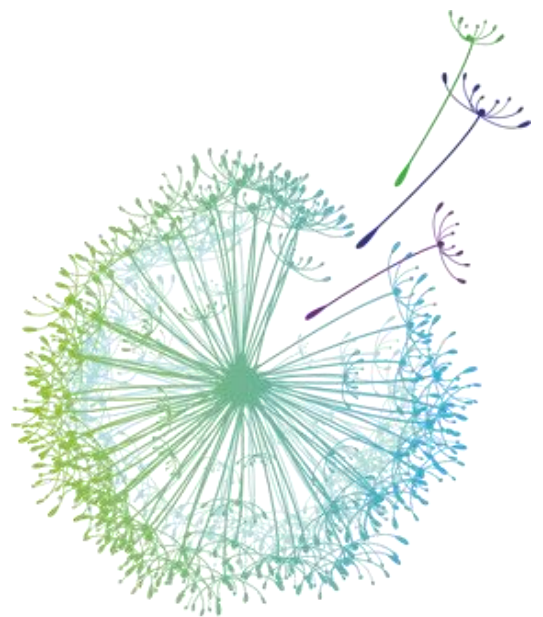
[www.kbulg.org.au](http://www.kbulg.org.au)

2016



Empowerment  
Through Education

*Living A Dream  
Building A Future*



2017  
INTERNATIONAL YEAR  
OF SUSTAINABLE TOURISM  
FOR DEVELOPMENT

# Contents

Executive Summary	2	Annual Tree Planting Day	17
CEO Report	3	Reconstructed Art Competition	18
List of Achievements	4	New Learning Programs	19
Sponsors & Partnerships	5	Karlkurla Community Nursery	19
Management of KBULG	7	Promoting Indigenous Heritage	20
Environmental & Community Achievements		Connecting People to Parks & Nature	21
Measurable Outcomes	8	Tailor—Made Education Programs	21
Awards	9	Cactus Eradication Project	22
Projects & Activities		Chairperson's Report	23
Membership	10	Conclusion	24
Junior Landcare	10	Financial Report	
Media	11	Independent Auditors Report	25
Newsletter	11	Promotional Posters	31
Website	11		
Displays, Expos and Festivals	12		
Clean Up Kalgoorlie-Boulder Day	12		
New Partnerships	13		
Promoting Waterwise Gardening	13		
Eco & Cultural Education Centre	14		
Sustainable Garden Quest	16		



# Executive Summary

Kalgoorlie-Boulder Urban Landcare Group (KBULG) is a community-based Environment and Conservation Organisation.

The group has been working to improve the environment in and around Kalgoorlie-Boulder for over 40 years. KBULG is a registered Charitable Organisation.

## VISION

KBULG's vision is to work for a "better environment and better lifestyle" for the people of Kalgoorlie-Boulder through "collaboration, education and participation".

1. To remain the leading environmental group in the goldfields.

2. To facilitate Kalgoorlie-Boulder becoming a more environmentally aware community.

3. To inspire the Kalgoorlie-Boulder community to be environmentally active.

4. To ensure the sustainability of KBULG.





## CEO Report

I am pleased to present the Annual Report for Kalgoorlie-Boulder Urban Landcare Group (KBULG) for the financial year ending 30 June 2017.

KBULG is once again reflecting on a wonderful and successful year, achieving all our goals we strived for, and much more! We are thankful to the community of Kalgoorlie-Boulder for enthusiastically supporting and attending all our annual community awareness/education events. We have continued to increase our visibility in the community by supporting other organisations and their events, and have also significantly grown our engagement in new community education activities.

Our success over the last 12 months is largely attributed to our strong and fruitful working relationships with our partners, sponsors and friends. These enabled the completion of our Eco & Cultural Education Centre, representing the greatest achievement of our organisation to date. This new education facility will host new courses and events that foster inclusion, skill development and personal well-being for the community. Witnessing the dedication of individuals and agencies who have contributed to this wonderful cause has been a truly heartwarming experience.

We will continue to deliver all our annual events, projects and activities, whilst using every opportunity to grow our involvement in the community, and we will encourage residents to interact within our community nursery and through our events and activities. Making use of our new education facility we will work on developing and delivering innovative education programs in collaboration with Central Regional TAFE and other existing and prospective partners.

Over the last year KBULG's support and volunteer network has grown exponentially, and our nursery has become a true community hub, welcoming residents and visitors from all walks of life. To each and everyone who has been part of our projects, activities and events over the last year - Thank you so much for your enthusiasm, motivation and dedication, which makes it possible for us to continually, year on year, achieve our goal of creating a "better environment and better lifestyle" for the people of the Goldfields.

I would like to sincerely thank our dedicated KBULG staff team (past and present), the committee, members, partners and sponsors (both financial and in-kind). I really appreciate your support and input and look forward to working with you this year to deliver many, many more GREAT events and projects.

*Many Thanks and Regards  
Kim Eckert*



# Achievements 2016–2017

<b>JUNIOR LANDCARE</b>	Kalgoorlie-Boulder Primary schools were involved in the Junior Landcare Programme this year through KBULG conducting Bushwalks through Karlkurla Bushland Park and Tree Planting Projects with the schools. KBULG also presented talks at schools and participated in school expositions.
<b>NEWSLETTER</b>	Continued to produce a seasonal newsletter which is published as a full page centre spread in Saturday's Kalgoorlie Miner. With approximately 15,000 copies printed, we are reaching a wide audience.
<b>RECONSTRUCTED ART COMPETITION</b>	The rEConstructed Art Competition & Exhibition encouraged members of the community to source and utilise waste products and materials to create innovative pieces of art. Re—duce—Reuse—Recycle, celebrated as part of National Recycling week.
<b>CLEAN UP DAY</b>	KBULG hosts the "Clean Up Kalgoorlie-Boulder Day" in conjunction with Clean up Australia Day. The community cleaned up bushland in and around Rotary Peace Park. It was a great exhibition of community spirit.
<b>TIDY TOWNS &amp; SUSTAINABLE CITIES AWARDS</b>	KBULG entered Kalgoorlie-Boulder into the 2016 Tidy Towns Sustainable Communities Awards and won the 2016 State Award for Water Conservation.
<b>SUSTAINABLE GARDEN QUEST</b>	KBULG launched its annual Sustainable Garden Quest in conjunction with the major sponsors Bergie's Soils, Kalgoorlie Miner and Water Corporation. The competition focused on all aspects of creating and maintaining a sustainable garden, the overall appearance, colour and tidiness of gardens and verges.
<b>COMMUNITY TREE PLANTING DAY</b>	KBULG coordinated the Annual Community Tree Planting day in conjunction with the City of Kalgoorlie-Boulder and core sponsors. The site for 2016 was at Gatacre Drive (Airport Side) opposite O'Connor IGA. 3000 plants were planted by as many as 150 volunteers.
<b>NATIVE PLANT GROUP</b>	Participants in the KBULG Native Plant Group continued to propagate local natives from seed & cuttings. Plants grown by the group are distributed to local schools and community groups free of charge. The Native Plant group meets on the last Sunday of every month.
<b>KARLKURLA BUSHLAND PARK</b>	KBULG continues to support Kalgoorlie-Boulder City Council with the park management, along with bush walks, tree planting and school projects. Improvements to the park over the last few years include pedestrian counters and a new boardwalk bridge constructed from recycled plastic.
<b>GIFSA</b>	KBULG continues to support the Goldfields Individual Family Support Association (GIFSA) through encouraging people living with disabilities and their carers to further develop interests & training opportunities at the Karlkurla Community Nursery.
<b>SCATTER THE SILKY PEAR</b>	This program enables tourists to pick up a brochure and a packet of Karlkurla seeds (for a small donation) from the Kalgoorlie-Boulder Visitor Centre and scatter them in Karlkurla Bushland Park. Funds from seeds sold contribute to projects within Karlkurla Bushland Park.
<b>REGENERATION ZONES</b>	A series of fenced Regeneration Zones encompass an area of approximately 3,500 hectares around Kalgoorlie-Boulder. The Regeneration Zones safeguard habitat fragments for endemic species with locally restricted habitats such as rare <i>Eremophila</i> species. Continued awareness has been raised through the media and the KBULG newsletter, educating the community to preserve the natural environment. KBULG also carries out strategic audits of the regeneration zones, evaluating the adequacy of existing fencing and identifying issues arising from illegal rubbish dumping and weed infestations.
<b>PUBLIC AWARENESS AND PROMOTION</b>	KBULG continues to get out and about within the community to promote the local environment and the importance of living sustainably. This is achieved by attending community events like the Spring Festival, Kids Fest, Lighting of the Xmas tree, schools and public/group forums, in addition to KBULG's own education and conservation events/projects.
<b>RECYCLING</b>	KBULG continues to support the City of Kalgoorlie-Boulder with public awareness promotion and education relating to waste cycle management, with a particular focus on recycling. KBULG continues to lobby for business and commercial recycling.
<b>MEMBERSHIP</b>	KBULG continues to promote its community services throughout the community and constantly strives to welcome new members. In 2016-2017 we had over 500 members.

## Sponsors and Partnerships

KBULG could not achieve our goals without the support of our core sponsors: The City of Kalgoorlie-Boulder, Northern Star Resources (Kanowna Belle), KCGM, GEMG, Evolution Mining, the Department of Biodiversity, Conservation & Attractions (Kalgoorlie-Boulder) and Water Corporation.

These organisations work in partnership with KBULG and help us to achieve our vision of working for a "Better Environment and Better Lifestyle" for the people of the Goldfields.

Our sponsors provide the ongoing funding required for all of KBULG's projects including Junior Landcare, Tree-planting, KBULG Newsletter, Karlkurla Bushland Park, Karlkurla Community Nursery, Native Plant Group, Regeneration Zone Management, numerous other projects and activities, in addition to the general administration of the group.

Our core sponsors are integral to maintaining the profile and respect that we hold within our community.

KBULG has strong links and working relationships with all of our core sponsors, mining companies and businesses in this region, who provide in-kind support to our programs and initiatives.

All of our projects involve partnerships that provide mutually beneficial outcomes.

KBULG regularly acknowledges the vital role of sponsors to its operations.



Department of  
Parks and Wildlife



## Sponsors and Partnerships (continued)

### SPONSORS & CONTRIBUTIONS

City of Kalgoorlie-Boulder	\$75,000
Evolution Mining	\$30,000
Northern Star Resources	\$20,000
KCGM	\$20,000
LandCorp	\$ 5,000
Water Corporation	\$ 5,000

### OTHER GRANTS AND SPONSORSHIP

GEDC	\$108,000
CR TAFE	
GEMG	\$ 5,500

### OTHER SPONSORS / IN KIND DONORS AND PARTNERS

A C Patroni Fencing  
 Alu Glass  
 Artgold Inc  
 Bergie's Soils  
 Birdlife Australia  
 Boulder Contracting & Maintenance (BC&M)  
 Bush Blossom Gallery  
 Central Regional TAFE  
 Cleanaway  
 Coles, Hannans and Kalgoorlie  
 DBC&A Kalgoorlie-Boulder  
 Department of Transport WA  
 Double Line Drafting  
 EAC Maintenance  
 Eastern Goldfields College  
 Emyjor Services  
 Farr's Painting Services  
 GEDC  
 GIFSA  
 GNRBA  
 GNRBA  
 Goldfields Naturalists' Club Inc  
 Goldfields Toyota  
 GWHCC  
 Kalgoorlie-Boulder Business Development Centre  
 Kalgoorlie-Boulder Visitor Centre  
 KBCCI  
 Keep Australia Beautiful, WA  
 McCreed Homes & Carpentry  
 McDonalds, Kalgoorlie-Boulder  
 MCM Protection  
 MJR Marketing  
 Modus Australia  
 Museum of the Goldfields

Nindethana Seeds  
 Office National Kalgoorlie  
 Onsite Safety Services  
 O'Reilly Consulting  
 Outback Energy  
 Piccadilly Butchers  
 Pindan  
 Rotary Club of Boulder  
 Rotary Club of Hannans  
 Rotary Club of Kalgoorlie  
 Royalties for Regions  
 RSF Contracting  
 Rydges, Kalgoorlie Resort & Spa  
 Section 95 Day Release Prisoners  
 Sentrex Security  
 Skill Hire Work for the Dole Program  
 Skillhire, Kalgoorlie  
 St Joseph's Boulder  
 The Kalgoorlie Miner  
 The Salvation Army, Kalgoorlie-Boulder  
 Tin Dog Consulting  
 Vissign



# Management of KBULG

The KBULG committee is made up of a large and diverse group of individuals, and includes representatives from government, local industries and interested members of the community.

The Kalgoorlie-Boulder Urban Landcare Group coordinates and promotes many projects and is associated with many activities around the City of Kalgoorlie-Boulder. This is all coordinated from the KBULG office, which is located at Karlkurla Bushland Park.

KBULG employs a Fulltime paid CEO. Kim Eckert has been employed within this position since January 2013. Kim is responsible for the day-to-day management and coordination of the organisation, under direction from the KBULG committee.

Part-time and Casual staff along with Volunteers assist with the various projects, including; the Junior Landcare Program, Clean up Australia Day, guided bushwalks, Community Tree Planting Days, manning the KBULG stall at displays and expositions, along with administration and nursery operation tasks.

The KBULG CEO is responsible for establishing successful avenues of community liaison and reaching a high diversity of groups and organisations, consequently involving community members from all socio-economic backgrounds. The CEO ensures projects are planned, implemented, maintained and monitored. Major tasks include project development and funding, public education and coordination of community events. The staff also liaise with the Council, schools, government departments, sponsors and the media on local landcare projects and issues.

The elected Committee guides and supports the KBULG CEO with any issues that arise, along with project management decisions as required. The committee also provides strategic planning and direction for the group.

## Committee Members 2016/2017

### **Executive Committee**

#### **Chairperson**

Peta Osborne

#### **Vice Chairperson**

Susan Stirling  
Community Representative

#### **Treasurer**

Jennifer Jackson—Interim  
Community Representative

#### **Secretary**

David Strickland  
Community Representative

### **Committee Members**

Graeme Campbell	Community
David Pickles	Community
John Rees	Community

### **Sponsor Representatives**

Suzie Williams	City of Kalgoorlie Boulder Rep
Graeme Smith	KCGM Rep
Helena Kmit	KCGM Rep
Brendan McGillivray	Northern Star Resources Rep
Casey Hansen	Northern Star Resources Rep
Michelle Rowell	Northern Star Resources Rep

### **KBULG STAFF**

Kim Eckert	CEO
Mandi Roberts	Administration Officer
Brian Nazzari	Nursery Officer
Shane Scully	Nursery Assistant
Juliane Sander	Project Officer
Brenden Westbrook	Nursery Assistant
Rickie Brown	WFD Supervisor

# Environmental & Community Achievements

- In November 2009 KBULG held its very first Recycled Art Competition and Exhibition called "rECONstructed". In 2016 the competition and exhibition was viewed by thousands of people at the Western Australian Museum. The competition was highly successful with the uniquely creative input of professional artists, schools and community members.
- Approximately 150 people planted around 3000 trees, shrubs and ground cover plants on the barren area adjacent to Gatacre Drive (Airport Side) at KBULG's Annual Community Tree Planting Day in 2016.
- Over 60,000 plants were grown in KBULG's nursery, providing us with necessary plant numbers for tree planting events around town, and allowing thousands of plants to be donated to local community groups, schools and the community.
- 2016 saw many gardening enthusiasts enter their gardens into our annual Sustainable Garden Quest Garden Competition. The gardens looked fabulous and judges were very impressed.
- All schools in Kalgoorlie-Boulder and hundreds of students participated in KBULG's Junior Landcare Program in 2016/2017. Frequently organised activities included educational bushwalks with the duration and educational content adapted to the class needs, tree planting events on school grounds and classroom talks.
- Updating promotional and community educational material over this time has been a key focus. KBULG has significantly increased its social media presence, and is constantly working on updating existing educational materials and interpretive signage in Karlkurla Bushland Park.



# Environmental & Community Achievements (continued)

- KBULG continues to promote the Great Western Woodlands through conducting educational bushwalks for school kids in the community and visiting schools from the region, at community events and through donating and distributing the Great Western Woodlands field guide & pamphlets to schools, sponsors and community partners.
- All outcomes were achieved within this reporting period across all projects and activities. All measurable outcomes relating to projects and activities have been enhanced from previous years.

## AWARDS & CERTIFICATES

This year, KBULG received a certificate of appreciation for supporting and participating in the City of Kalgoorlie-Boulder community events:

- ♦ Lighting of the Xmas tree
- ♦ Community Expo
- ♦ Kids Fest
- ♦ Heart of Gold Festival

KBULG entered the *KBCCI Business Award* and won the category:

- ♦ "Employer Supporting People with a Disability".

In collaboration with the City of Kalgoorlie Boulder KBULG again entered Kalgoorlie-Boulder into the 2016 state-level *Tidy Towns Sustainable Communities Competition* and won:

- ♦ *2016 State Award for Water Conservation.*





# Projects and Activities

## MEMBERSHIP

The possibility of joining KBULG as a member and being enlisted as a friend of KBULG was introduced in 2003. During the 2016/2017 time period the number of enlisted member approximated 520. KBULG provides members with updated information about its activities and upcoming events, in addition to encouraging members to get involved in landcare activities and to assist KBULG with the organisation and delivery of events.

KBULG is very grateful to those members who invest part of their valuable leisure time into assisting KBULG with its nursery work and stallholder activities at events. It is an extremely rewarding experience for KBULG to witness a growing interest in conservation activities among community members from all age groups and professional backgrounds.

## KBULG JUNIOR LANDCARE

A major focus of all aspects of KBULG's work and envisaged future projects is the education of younger generations, providing for a more sustainable future of the Kalgoorlie-Boulder region and all of Australia. The Junior Landcare Program (JLP) is thus one of KBULG's most significant priorities and KBULG continues to assess the success of ongoing education activities and opportunities for new projects involving the young.

A major aim of JLP is to involve teachers of all Kalgoorlie-Boulder schools in environmental education, and KBULG accordingly invites all school teachers of the region to benefit from KBULG's environmental expertise and welcomes any type of interest from schools in educational activities. KBULG attempts to accommodate any request from schools in relation to Junior Landcare education and is always more than happy to go out of its way to respond to specific requirements. Frequently organised activities include educational bushwalks with the duration and educational content adapted to the class needs, tree planting events on school grounds, and classroom talks.

KBULG provides schools with regular updates, information and reminders about its activities, in addition to encouraging schools' involvement in KBULG's major community events such as the rECONstructed Art Competition, the Annual Clean up Kalgoorlie-Boulder Day and the Annual Kalgoorlie-Boulder Tree-Planting Day.

KBULG continues to receive positive feedback from participating schools in relation to its commitment to Junior Landcare education. The program encourages the young generation to gain an appreciation of the unique biodiversity values of the region, and to actively consider the implications of urban and industrial developments. KBULG is grateful to Northern Star Resources who continue to provide funding and on-ground support to the program.



## Projects and Activities (continued)

### MEDIA

KBULG is regularly featured in the local media and over the 2016/2017 period the number of articles reporting about KBULG's activities, events and various projects was 72 (with some advertising material featured multiple times). KBULG aims to inform a diverse range of community members about its activities and ongoing projects, and therefore invests considerable effort into maintaining fruitful working relationships with a variety of media outlets, including but not limited to: the Kalgoorlie Miner, Radio West, ABC Radio, GWN, and Rangelands NRM for its e-Newsletter publications.

KBULG actively informs the local media about its activities and promptly responds to requests for interviews or other information. These functional working relationships contribute to KBULG's frequent presence on the local news, numerous feature articles, and regular interviews with KBULG staff.



### NEWSLETTER

KBULG continued to produce its community newsletter in 2016/2017, informing the community about KBULG's events and activities, while at the same time highlighting opportunities for the community to get actively involved in environmental conservation.

The newsletter also features an educative component presented in an entertaining and easily understandable way such as information about a particular plant species or innovative opportunities for an environmentally more sustainable household. The four-page, coloured centre-spread newsletter is featured in the Saturday edition of the Kalgoorlie Miner, and KBULG consistently receives exceptionally positive feedback from the community. Any interested individual can also request the latest issue of the newsletter from KBULG.

### WEBSITE

KBULG has performed recent updates on its website. The website is an important tool facilitating access to a wealth of information about KBULG's activities and the region's conservation needs to a wide audience. A large proportion of membership requests are received via the online membership form, available as a website link. The website can be viewed at [www.kbulg.org.au](http://www.kbulg.org.au).

KBULG's Facebook page has become another important communication tool and the number of followers has considerably increased in 2016/2017. In addition to sharing KBULG's events and activities with a growing number of Facebook followers KBULG provides its followers with news and advice on sustainable living and green households through multiple daily posts. Thank you to Mandi Roberts of MJR for helping us with this.

*Thank you MJR*



## Projects and Activities (continued)

### DISPLAYS, EXPOS AND FESTIVALS

As the Goldfields most active environmental community organisation KBULG again contributed to many events throughout the 2016/2017 period. KBULG participated with displays and stalls at events such as the Goldfields Spring Festival, Kids Fest, WA Day, Goldfields Community Expo and the Heart of Gold Festival. Public displays and stalls allow KBULG to raise awareness on local environmental issues, and to provide educational materials and advice to a diverse target audience. KBULG's presence at events also allows the organisation to promote its many environmental projects and activities, and to raise environmental awareness within a fun setting.



### CLEAN UP KALGOORLIE-BOULDER DAY

One of KBULG's key objectives is to convey the message 'Reduce, Re-use, Recycle' to the wider community. This entails educating the community about the waste cycle including relevant waste decomposition time spans, in addition to conveying information about innovative waste reduction and recycling ideas. In line with this key objective KBULG delivers ongoing community education projects to educate the community about methods of waste prevention and waste recovery, and also hosts an annual Kalgoorlie-Boulder

Clean Up Australia Day - a nationwide initiative promoted through state-specific Keep Australia Beautiful Councils. The event is held at a different location every year, selected based on litter quantity, conservation significance and visual amenity priority.

This year's Clean Up Australia Day was organised on Sunday, 12 March 2017, one week after the nation-wide Clean Up Australia Day which coincided with a long weekend. The site of this year's Clean Up event was Rotary Peace Park - locally also known as Twin Dams. KBULG was excited with the great turn out of the event at the children - friendly location, and was especially pleased to welcome many families who volunteered to collect a large variety of rubbish items. The participants filled up a skip bin, supplied by Cleanaway, with rubbish items collected from within the park and surrounding areas.

The commendable conservation efforts of the many volunteers were rewarded with a BBQ and various raffle prizes. This year's Clean Up Australia Day event was again immensely successful at fostering community spirit and increasing civic pride within Kalgoorlie-Boulder.



## Projects and Activities (continued)

### NEW PARTNERSHIPS, COLLABORATIONS & SPONSORSHIP AGREEMENTS

#### Evolution Mining Sponsorship

KBULG has secured \$90,000 over three years from Evolution Mining to boost its nursery in Karlkurla Bushland Park. The project, in which \$90,000 will be put towards upgrading infrastructure and supporting education programs at the nursery, is the first major community project Evolution has managed in Kalgoorlie since it took over the Mungari gold operations in 2015.

#### Waste Wise Authority

A new partnership was formed in 2017 with the Waste Wise Authority WA. KBULG is raising the awareness of the Waste Authority School Program and assists schools to participate, become accredited and receive/acquit grants.

#### New partnership agreement with Skill Hire

KBULG developed the 1st Work for the Dole Project in the Goldfields which commenced in March 1999, and has now expanded its existing collaboration with Skill Hire. The new contract entails assuming management of the 'work for the dole' project at Hannan's North Tourist Mine.

#### Arboretum Agreement with the Department of Biodiversity, Conservation and Attractions

KBULG continues its agreement with the Department of Biodiversity, Conservation and Attractions, for the maintenance and upkeep of Kalgoorlie's Arboretum. KBULG's Arboretum maintenance work is typically undertaken three times a week by KBULG staff and is usually supported by Skill Hire work experience participants. Our team focuses on maintaining and enhancing the environmental health and visual appeal of the Arboretum, which entails weed removal activities, rubbish clearance, inspections and the upkeep of sanitary facilities.

### PROMOTING THE USE OF NATIVE PLANTS FOR REHABILITATION PROJECTS AND WATERWISE GARDENING

In the 2016/2017 period KBULG has been consulted for rehabilitation and tree planting advice from a diverse range of stakeholders, including Menzies Shire, Kalgoorlie-Boulder Community High School, St Joseph's School, St Mary's School and Wiluna Remote Community School.

KBULG also continues to support the community with advice on waterwise gardening activities and actively promotes gardening with local native plants. In addition to being welcome to visit KBULG's nursery throughout the week, community members are also provided with expert advice and information on how to create waterwise gardens at various community events.

KBULG's community nursery has gladly witnessed a continuously rising interest in waterwise gardening with local native plants. Any related enquiries are promptly addressed by knowledgeable staff members, and residents are supplied with lists of native trees and shrubs suitable for planting along with pamphlets and other helpful reference material.



## Projects and Activities (continued)

### **KBULG'S NEW ECO & CULTURAL EDUCATION CENTRE - A PLACE TO LEARN AND SHARE WITHIN A UNIQUE BUSHLAND ENVIRONMENT**

With the support of generous in-kind donations (including the donation of a 13m x 7m transportable classroom by Central Regional TAFE), a Royalties for Regions Regional Grant and additional sponsorship funding, KBULG's new Eco & Cultural Education Centre was opened in June 2017.

The installation of the donated container classroom required extensive modifications to existing nursery facilities including expansion of the compound and car-park along with existing fencing structures, installation of new toilet facilities, acquisition of furniture, additional electrical wiring and solar lighting. The classroom and nursery now fully cater for disabled community members after the installation of a disabled toilet along with ramps, rails, and widening of the classroom door for easier access. After the community nursery was broken into, and the classroom vandalised in March, a comprehensive upgrade of nursery and classroom security systems was also undertaken.

Following the donation of the transportable classroom from Central Regional TAFE, KBULG successfully motivated and mobilized people from different agencies to source and secure funding and resources for the classroom's extensive makeover and upgrades to the existing community nursery facilities. A grant over \$109,000 from the Goldfields-Esperance Development Commission (GEDC) Regional Grants Scheme allowed this project to become a reality, along with contributions from GEMG, KCGM, DPaW, Pindan, Central Regional TAFE, Evolution Mining, the City of Kalgoorlie-Boulder and KBULG.

Despite the at times overwhelming magnitude of the task and associated project costs, all of KBULG's visions for the project were successfully realized thanks to the generous input of many.





## Projects and Activities (continued)

### REALISING THE DREAM OF A LOCAL LEGEND

The establishment of an Eco-Education Centre within Karlkurla Bushland Park was the ultimate goal of the late Doug Krepp, a city councilor who wanted to provide local residents with the opportunity to experience the Goldfields Bushland as he was able to as a child, and for that reason lobbied along with the community to spare the park from residential development in 1988. Today the park hosts both a walk trail and a monument in his honor. The classroom was officially opened on 28 June 2017 and Mr Krepp's widow, Eileen, made the trip from Mandurah to unveil the building alongside Mayor John Bowler.

The addition of the classroom facility to the community nursery had the ultimate goal to enable KBULG to expand its community education programs and to allow for the development of new initiatives such as special - interest and conservation - awareness workshops/seminars.

Interest in our new facility and expanded community nursery has indeed been overwhelming, and arrangements for new courses and activities were made shortly after the commencement of building and upgrade works.

All aspects of the project have been met and have by far exceeded our expectations. KBULG Staff, board members and volunteers worked tirelessly during the project and now we have a first-class training facility where the community and visitors can come together to learn and share in one unique location.

THANK YOU to everyone who helped our dream become a reality.



# Projects and Activities (continued)

## SUSTAINABLE GARDEN QUEST

KBULG's Sustainable Garden Quest has become an important spring event and in 2016 again served its purpose in promoting, educating, and awareness-raising about opportunities and varied techniques for waterwise gardening. With seven separate categories and winners announced at Kalgoorlie-Boulder's Spring Festival, the annual event significantly contributes to increasing residents' interest in landscaping with innovative ideas for waterwise gardening, which greatly enhances the street-scape of Kalgoorlie – Boulder.

The event invites everyone engaged or interested in waterwise gardening within the Kalgoorlie-Boulder Region to share their passion for gardening with like-minded individuals, while having the opportunity to obtain encouraging advice and to win prizes. The winners of last year's Spring competition were announced at the Kalgoorlie-Boulder annual Spring Festival, held on 09 October 2016. Winning entries were selected from following five categories: Residential (Owner & Tenant combined), Commercial (Business and Industry combined), Schools, Community Organisation, and Edible Garden.

Last year the judges were particularly impressed with the amount of effort and planning demonstrated by residents. Judges commended the creative use of a variety of native species and edible plants, and the entrants' real passion for gardening and sustainability. The Water Corporation has become a new sponsor of the event that promotes sustainable water use to the community. As in previous years Bergie's Soils donated 50% of the gift vouchers. The advertising of the competition was again sponsored by the Kalgoorlie Miner.



**Kalgoorlie-Boulder Sustainable Garden Quest 2016**

Enter NOW for your chance to win a Gift Voucher for Bergie's Soils

**CATEGORIES**

- Residential (Owner & Tenant Combined)
- Commercial (Business & Industry Combined)
- Schools
- Community Organisation
- Edible Garden (Vegetables/Fruit/Bush Tucker)

This year's competition provides you with the opportunity to showcase your sustainable garden, with winners selected based on the overall appearance, colour and tidiness of gardens and verges.

For entry forms and judging criteria please email [admin@kbulg.org.au](mailto:admin@kbulg.org.au) or visit Lotteries House, Bergie's Soils or the Kalgoorlie Miner.

Follow us on the KBULG Facebook page for competition updates.

Entries / nominations close COB Wednesday 28<sup>th</sup> September 2016.  
Judging occurs on Saturday 1<sup>st</sup> October  
(Entrants need to provide garden access). Winners will be announced at the Spring Festival on Sunday 9<sup>th</sup> October 2016.

Sponsors: KCGM, Water Corporation, Kalgoorlie Miner, BERGIE'S

## ANNUAL TREE PLANTING DAY

KBULG's Annual Tree Planting Day has established itself as one of the region's major community events, attracting many conservation-conscious individuals and families.

Every year KBULG selects a barren area in Kalgoorlie-Boulder for re-vegetation and this year's tree-planting day, organised on Sunday, the 31 July 2016, focused on the barren area on Gattacre Drive (Airport Side) with the purpose of forming a green belt to reduce dust and enhance the aesthetics of the area.



## Projects and Activities (continued)

The community's interest in the event continues to grow and saw approximately 150 participants plant thousands of seedlings. Due to the high participation rate the 2500 seedlings of hardy species such as Wattles, Acacias, Atriplex and Eremophilas were planted in just over one hour.

KBULG was highly impressed by the enthusiastic community spirit and felt privileged to be able to witness the unified work efforts by community and corporate groups, mining companies, families and individuals who all strived to do their bests to assist the 'Greening of the Goldfields' and an enhanced lifestyle for the community as an entity.

The City of Kalgoorlie-Boulder carried out important site preparation works such as installing the reticulation, mulching, ripping, along with offering on-ground support on the day.

In addition to the City of Kalgoorlie Boulder, KBULG is grateful to KCGM, Northern Star Resources and the Kalgoorlie Miner for providing significant sponsorships.

Participants were rewarded with a free sausage sizzle prepared by KCGM. KBULG would once again like to thank everyone for a magnificent day of greening Kalgoorlie-Boulder.



## Projects and Activities (continued)

### RECONSTRUCTED ART COMPETITION

Coinciding with National Recycling Week, KBULG once again invited the community to participate in the Reconstructed Art Competition and Exhibition. The competition and corresponding exhibition places major emphasis on educating the community, in particular the younger generation, about the importance of recycling by spreading the key message of Reduce, Reuse, and Recycle.

This year's rECONstructed Art Competition was held in November 2016 and again proved to be a wonderful opportunity to raise awareness about the importance of recycling. The competition, including seven categories with cash prizes for each, attracted some superbly creative pieces of artwork from Kalgoorlie-Boulder residents and participants from nearby areas.

For the second year competition entries were on display in the Western Australian Museum, resulting in the exciting, educational, and highly visible Arts exhibition being showcased to a wide audience in this popular landmark for visitors and locals alike.



The winners of the seven categories were announced at the exhibition opening night on Friday, 11 November 2016. Organised for the seventh time, the event was themed "Anything Goes". KBULG and the judging committee made up of independent volunteer judges from art and waste management backgrounds were highly impressed by the quality of the submitted artwork that demonstrated exceptional artistic creativity and a thorough understanding of the waste cycle by the community.

Among the winning entries was a display made from crocheted video tapes, entered by the Wongutha Birni Aboriginal Corporation. Entries were judged based on artistic quality, creativity & aesthetic merit, craftsmanship & quality of work, and function & innovation. Event sponsors included KCGM, the WA Museum, the Kalgoorlie Miner and the Water Corporation, while the City of Kalgoorlie-Boulder and Northern Star also supported the event as KBULG's core sponsors.



## Projects and Activities (continued)

### **PARTNERSHIPS FOR INNOVATIVE COMMUNITY LEARNING OPPORTUNITIES**

With the successful acquisition and installation of the Eco and Cultural Education Centre, facilitated through KBULG's intensive engagement with Central Regional TAFE, sponsors, partners and contractors, KBULG now provides a new and unique education facility for the benefit of the entire community, TAFE and independent course providers. This facility now delivers employment pathway programs and enables residents to embark on further education programs.

Central Regional TAFE has recently introduced a Horticulture and Conservation & Land Management Course in Kalgoorlie-Boulder and this course is now held at the new education centre, enabling students to gain hands-on experience with all aspects of nursery work and park management. The classroom facility also strongly benefits KBULG's existing collaboration with Skillhire as work experience participants under the 'work for the dole' program can be provided with additional training and induction programs in the new facilities.

KBULG's long-standing relationship with disability-support groups from the Goldfields Individual Family Support Association (GIFSA) is further intensified through offering training opportunities at the Karlkurla Community Nursery, and the upgraded nursery facilities will provide an enhanced learning and activity space for GIFSA volunteers. The new space also provides the ideal setting for a variety of special interest conservation-focussed events and workshops organised by different interest groups and agencies such as flora and fauna workshops held by the Goldfields Environmental Management Group (GEMG) and the Goldfields Naturalists'.

### **KBULG'S COMMUNITY NURSERY - A PLACE TO MEET & EXCHANGE**

The Eco & Cultural Education Centre represents a space for the sharing and conveying of conservation and sustainable living – focussed ideas, while fostering inclusion, skill development and personal well-being for the community. Every community member and visitor to the region is warmly welcome to spend time within the community nursery and is able to learn from KBULG staff who take time to interact and listen.

The community nursery has become a hub for engagement and knowledge-sharing for all community groups, including KBULG staff & volunteers, disability volunteers, work for the dole participants, horticulture and conservation & land management TAFE students, workplace & work experience students, day release prisoners, local Aboriginal ranger groups, disengaged Aboriginal & non-Aboriginal students, native plant group participants and bushwalk participants from local schools and camp schools.

KBULG is proud to be a fully inclusive local community group which engages residents from all walks of life, with participants in our educational programs at the nursery ranging from day-care toddler groups to groups of senior citizens from the Kalgoorlie-Boulder OWLS.





## Projects and Activities (continued)

### PROMOTING INDIGENOUS KNOWLEDGE & CULTURAL UNDERSTANDING

KBULG strongly promotes aboriginal involvement in Landcare and Cultural Education. The organisation successfully negotiated and commenced the implementation of a landscaping and rehabilitation project with the Wiluna Ranger Program in June 2017, while also intensifying its partnership with Wiluna Remote Community School. Given the unique conservation value and pronounced indigenous heritage of the region, KBULG is proud to contribute to facilitating indigenous involvement and ownership in conservation and land management on the ground. KBULG has also supplied native plants for restoration projects to the Tjuntjuntjara Aboriginal Community, and endeavours to further expand its engagement with Aboriginal communities.

With the assistance of a grant from the Boulder Rotary Club, acquired in August 2016, KBULG is equipping the community nursery with more aboriginal artefacts and tools that can be used for demonstrations during cultural tours and events at the community nursery. The organisation continues to engage local Aboriginals to actively take part in community initiatives, interacting with residents by providing them with employment opportunities as Aboriginal Guides for KBULG's cultural tours, and encouraging them to share their knowledge about Aboriginal practises and traditional uses of the land and plant species in the Park.

Over 2016/2017 KBULG has significantly expanded its engagement with aboriginal youth who regularly visit the nursery to partake in education and training courses, often accompanied by aboriginal elders.



## Projects and Activities (continued)

### ' GREENING THE CITY' & CONNECTING PEOPLE TO NATURE

To increase the city's carbon sequestration capacity KBULG's nursery staff and volunteers propagated more than 60,000 plants over the last 12 months, supported by participants of KBULG's monthly 'Native Plant Group' and Skill Hire's work for the dole program, enabling KBULG to donate thousands of plant seedlings to community groups, communal spaces, community events (i.e. KBULG's annual Kalgoorlie-Boulder Tree Planting Day), and schools that create native gardens with KBULG's assistance.

KBULG promotes the community's appreciation of the local environment and encourages the community to enjoy the simple things in life that do not require the use of non-renewable resources (i.e. gardening, cycling and bushwalking in Karlkurla Bushland Park which is maintained by KBULG).

In recognition of KBULG's wholeheartedly dedication to connecting people to parks and nature, in March 2017 the Governor of Western Australia appointed KBULG's CEO Kim Eckert as a WA Parks Ambassador for WA Parks. The privilege to promote WA's unique natural and cultural heritage alongside some of the state's most inspiring individuals significantly enhances KBULG's image and opens up new avenues for collaborations and partnerships.



### DELIVERY OF TAILOR – MADE EDUCATIONAL ACTIVITIES

Over 2016/2017 KBULG continued to work on the development of innovative education resources and methods of conveying environmental concepts and ideas, while requests for educational and informational talks and activities from schools and interested community groups constantly increase.

The organisation's ongoing involvement with local schools continues to evolve and KBULG responds to any request to carry out an educational activity (i.e. bushwalks, tree-planting, classroom talk) at no cost to schools.

The geographical scope of KBULG's education activities have also expanded considerably in



recent times, with requests for the delivery of talks/activities and participation in events from schools and other agencies from locations such as Wiluna, Coolgardie, Kambalda, Menzies and Norseman.



# Projects and Activities (continued)

## WILLIAMSTOWN CACTUS ERADICATION PROJECT

Invasive Cacti represent a major biodiversity threat to the Goldfields. Williamstown, the remains of East Kalgoorlie, which now consists mostly of 'The Super Pit' open cut mine, was severely affected by species of cacti that have been declared pests in Western Australia. The small existing area features mostly housing with one small primary school. It is also home to the Mount Charlotte mine shaft and Nanny Goat Hill. Tenure issues were complex as the project site covered council land, unallocated crown land and is also part of a mining lease.



Coordinating the large-scale cactus eradication was complicated by multi-tenure issues and the overwhelming nature of the task, making it impossible for one individual agency to successfully tackle the issue.

Developing a best practise approach making effective use of the unique resources and skill sets from different agencies KBULG as the coordinating agency successfully mobilized and delegated the involvement of the community, the City of Kalgoorlie Boulder, Parks & Wildlife and KCGM.

Through a combined effort between these agencies and the Department of Primary Industries & Regional Development (DPIRD), the Goldfields Nullarbor Rangelands Biosecurity Association (GNRBA), Boulder Contracting and Maintenance, and coordinated by KBULG, a staggering 765 tonnes of declared high-priority invasive cacti species/waste was mechanically removed.



This commendable group effort has been acknowledged as a best practice role model solution for similar future situations by DPIRD and the Governor of Western Australia.

## Cactus effort to set national standard

Rebecca Nadge

A monster cactus removal effort in which 70 truckloads of the plants were mechanically removed from Williamstown last year is likely to feature in a new national best-practice manual.

The manual will be developed under the Commonwealth-funded Agricultural Competitiveness White Paper.

Wild Matters director Matt Sheehan said the manual was designed for landowners who needed to manage cactus species, and would feature identification of the various species, impacts, case studies and control methods from groups around the country.

Authorities and concerned community members met in Kalgoorlie-Boulder yesterday to discuss

their experiences in cactus control methods, which ranged from chemical spraying to mechanical removal.

Mr Sheehan also travelled to Menzies, Coolgardie, Gwalia and Williamstown to view different infestations.

"We're trying to make a one-stop shop," he said.

The mechanical removal at Williamstown was likely to feature in the manual, he said.

"If it's not case study in itself, it will certainly be a featured section," he said.

Goldfields-Nullarbor Rangelands Biosecurity Association chief executive Ross Wood said removing the topsoil and the extensive follow-up spraying was what made the Williamstown job so successful. "It's probably one of the

biggest mechanical removals in Australia that's been done," he said.

"We put a lot of care into doing it."

But Mr Wood said removal methods varied from site to site.

"It's not a matter of necessarily finding out how to deal with it — each site is obviously different," he said.

Recent wet weather would prompt the cacti to grow again, he said, but any control work would have to wait until spring when the cacti had dried out.

"We'll be dealing with this stuff for a decade," he said.

"The moment you let go, we're back to where we started." The draft of the manual is due to be completed by the end of September.



## Chairperson's Report 2016—2017

KBULG has had an amazing year.

The building/renovation of the donated classroom has been completed, as well as the associated work on the toilet block and nursery.

The Eco and Cultural Education Centre project has taken over a year but has been worth it. KBULG now has a building which can be used for all manner of education programs as well as be hired out for meetings and small conferences.

Congratulations to Kim, staff and volunteers for the work you have done on the site, therefore saving money on the project.

KBULG has been able to continue the wonderful community events that they run every year. The community events such as the Clean Up Day and the Tree Planting Day were once again very well supported by members of the community and also by our valuable sponsors.

Kim has continued to promote the environment and the Goldfields region by entering a number of award programs. Some of the awards programs entered this year were; Tidy Town Awards, Keep Australia Beautiful Awards, DMP Community Partnership Awards, KBCCI Business Awards, State Landcare Awards and others. These have been a valuable promotion of our organisation and the region.

This year has seen an expansion of programs such as the School Based work placement program, work experience, disengaged students program, Education support student programs, Work for the dole program as well as the Waste wise program.

These are valuable community engagement programs and develop work and life skills for the students and volunteers involved.

Our sponsors have once again been a valuable support for the programs and activities run and developed by KBULG. Evolution Mining is a new sponsor who has come on board this year. I would also like to extend a thank you to all our other major sponsors. City of Kalgoorlie-Boulder, KCGM, Northern Star Resources, Evolution Mining, Goldfields-Esperance Development Commission, Central Regional TAFE, Kalgoorlie Miner, Water Corporation, MJR Marketing and Bergie's Soils.

A HUGE thank you to all the amazing staff and volunteers who have made this year so successful.

Well done to Kim for all the work you have done in keeping everything under control. You are an amazing ambassador for KBULG. We really appreciate all the hard work you do for the organisation and the community.

From Peta



## Conclusion

KBULG's vision is to work for a *better environment and better lifestyle* for the people of the Goldfields by encouraging *communication, education, participation and collaboration*.

The group aims to involve the community in all its activities and is committed to working with other community groups, schools, business and government to achieve its goals.

The Kalgoorlie-Boulder Urban Landcare Group, previously the Goldfields Dust Abatement Committee, has conserved and established native vegetation in the Goldfields for over 40 years. Due to past, present and future impacts and threats to

the Kalgoorlie-Boulder environment, planning and promoting our activities and the need for conservation and rehabilitation of the Goldfields environment is given high priority.

KBULG has achieved all aims, objectives and outcomes over this reporting period and is committed to continuing to serve the Goldfields Community and its environment. Once again a very big thank you to all of our sponsors, partners, supporters, staff, committee and members.





# Financial Report

## Kalgoorlie Boulder Urban Landcare Group Inc Independent Auditor's Report to the Members

### Report on the Audit of the Financial Report

#### Opinion

We have audited the financial report of Kalgoorlie Boulder Urban Landcare Group Inc (the association), which comprises the Statement by Members of the Committee, Income and Expenditure Statement, Statement of Financial Position as at 30 June 2017, a summary of significant accounting policies and the certification by members of the committee on the annual statements giving a true and fair view of the financial position and performance of the association.

In our opinion, the accompanying financial report presents fairly, in all material respects, the financial position of the association as at 30 June 2017 and [of] its financial performance for the year then ended in accordance with the accounting policies described in Note 1 to the financial statements and the requirements of the Associations Incorporation Act 2015.

#### Basis for Opinion

We conducted our audit in accordance with Australian Auditing Standards. Our responsibilities under those standards are further described in the Auditor's Responsibilities for the Audit of the Financial Report section of our report. We are independent of the association in accordance with the ethical requirements of the Accounting Professional and Ethical Standards Board's APES 110 Code of Ethics for Professional Accountants (the Code) that are relevant to our audit of the financial report in Australia. We have also fulfilled our ethical responsibilities in accordance with the Code.

We believe that the audit evidence we have obtained is sufficient and appropriate to provide a basis for our opinion.

#### Emphasis of Matter – Basis of Accounting

We draw attention to Note 1 to the financial report, which describes the basis of accounting. The financial report has been prepared to assist the association to meet the requirements of Associations Incorporation Act 2015. As a result, the financial report may not be suitable for another purpose. Our opinion is not modified in respect of this matter.

#### Responsibilities of the Committee for the Financial Report

The committee is responsible for the preparation and fair presentation of the financial report in accordance with the financial reporting requirements of the Associations Incorporation Act 2015 and for such internal control as the committee determines is necessary to enable the preparation and fair presentation of a financial report that is free from material misstatement, whether due to fraud or error.

In preparing the financial report, the committee is responsible for assessing the association's ability to continue as a going concern, disclosing, as applicable, matters related to going concern and using the going concern basis of accounting unless the committee either intends to liquidate the association or to cease operations, or has no realistic alternative but to do so.

#### Auditor's Responsibilities for the Audit of the Financial Report

## Kalgoorlie Boulder Urban Landcare Group Inc

### Independent Auditor's Report to the Members

---

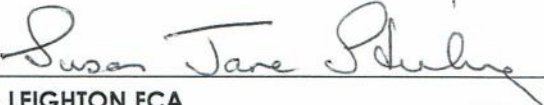
Our objectives are to obtain reasonable assurance about whether the financial report as a whole is free from material misstatement, whether due to fraud or error, and to issue an auditor's report that includes our opinion. Reasonable assurance is a high level of assurance, but is not a guarantee that an audit conducted in accordance with the Australian Auditing Standards will always detect a material misstatement when it exists. Misstatements can arise from fraud or error and are considered material if, individually or in the aggregate, they could reasonably be expected to influence the economic decisions of users taken on the basis of this financial report.

As part of an audit in accordance with Australian Auditing Standards, we exercise professional judgement and maintain professional scepticism throughout the audit. We also:

- Identify and assess the risks of material misstatement of the financial report, whether due to fraud or error, design and perform audit procedures responsive to those risks, and obtain audit evidence that is sufficient and appropriate to provide a basis for our opinion. The risk of not detecting a material misstatement resulting from fraud is higher than for one resulting from error, as fraud may involve collusion, forgery, intentional omissions, misrepresentations, or the override of internal control.
- Obtain an understanding of internal control relevant to the audit in order to design audit procedures that are appropriate in the circumstances, but not for the purpose of expressing an opinion on the effectiveness of the association's internal control.
- Evaluate the appropriateness of accounting policies used and the reasonableness of accounting estimates and related disclosures made by the committee.
- Conclude on the appropriateness of the committee's use of the going concern basis of accounting and, based on the audit evidence obtained, whether a material uncertainty exists related to events or conditions that may cast significant doubt on the association's ability to continue as a going concern. If we conclude that a material uncertainty exists, we are required to draw attention in our auditor's report to the related disclosures in the financial report or, if such disclosures are inadequate, to modify our opinion. Our conclusions are based on the audit evidence obtained up to the date of our auditor's report. However, future events or conditions may cause the association to cease to continue as a going concern.
- Evaluate the overall presentation, structure and content of the financial report, including the disclosures, and whether the financial report represents the underlying transactions and events in a manner that achieves fair presentation.

We communicate with the committee regarding, among other matters, the planned scope and timing of the audit and significant audit findings, including any significant deficiencies in internal control that we identify during our audit.

Signed on : 23 August 2017

  
P A LEIGHTON FCA



**Kalgoorlie Boulder Urban Landcare Group Inc**  
**Income and Expenditure Statement**  
**For the year ended 30 June 2017**

	2017 \$	2016 \$
<b>Income</b>		
Grants - Sundry	143,895.24	18,112.10
KBULG Activity Generated Income	17,420.00	20,000.00
Core Sponsors	128,486.20	120,000.00
Lotteries Comm Grant - Computer	63.63	199.99
Plant Sales	11,179.73	15,652.87
Karkurla Park Maintenance	41,036.27	44,160.51
Boulder Rotary Grant	1,818.18	
Interest received	863.81	1,212.69
Other income	11,464.38	4,985.72
Income - Employment Services	17,502.38	5,909.08
Total income	373,729.82	230,232.96
<b>Expenses</b>		
Adjustment To Audit	1,962.11	
Advertising Expenses	133.99	
Phone, Fax & Internet	3,223.27	4,474.41
Computer Maintenance & Software	903.17	678.29
Insurance	749.97	632.83
Audit/Accountancy	2,100.00	1,780.10
Meetings	2,409.42	1,250.92
Newsletter	5,949.10	3,160.55
Karkurla Signage	70.00	1,780.00
Uniform	252.45	
Promotions/Displays	1,439.54	936.00
Bank Charges	128.19	89.68
Reconstructed Art Comp	1,587.22	1,659.28
Special Events	452.47	1,930.71
Tree Planting Day	342.89	327.59
WFD Hannans North Project	818.73	
Clean Up Australia Day	250.76	421.53
Culture Trail	4,450.05	413.17
Depreciation	3,043.00	3,926.00
Equipment < 1000	1,751.82	
Plants/Nursery Expenses	10,825.22	8,200.43

The accompanying notes form part of these financial statements.

# Kalgoorlie Boulder Urban Landcare Group Inc

## Income and Expenditure Statement

For the year ended 30 June 2017

	2017	2016
	\$	\$
Insurance - Voluntary Workers	387.55	
M/V Fuel & Oil	1,366.58	1,155.77
M/Vehicle - Registration/Insurance	1,915.83	2,048.88
M/V Repairs & Maintenance	851.69	648.83
M/Vehicle - Tyres	923.64	77.27
Provision for Employee Entitlements	5,229.63	1,909.05
Postage	220.07	5.45
Office Consumables	2,761.54	1,739.38
Rent Expenses	1,729.09	2,542.74
Repairs & maintenance	1,659.46	245.35
Staff Training		2,941.08
Subscriptions	295.45	131.82
Sundry expenses	1,274.05	201.20
Superannuation Expense	13,769.22	13,823.91
Travel, accom & conference	2,250.82	2,875.81
Sustainable Garden Comp	375.04	227.27
Salaries & Wages	160,607.25	149,328.75
Total expenses	238,460.28	211,564.05
<b>Net Income over Expenditure</b>	<b>135,269.54</b>	<b>18,668.91</b>

The accompanying notes form part of these financial statements.

**Kalgoorlie Boulder Urban Landcare Group Inc**  
**Detailed Statement of Financial Position as at 30 June 2017**

	Note	2017 \$	2016 \$
<b>Current Assets</b>			
<b>Cash Assets</b>			
Cash At Bank - 14 4731		24,111.50	7,216.73
Maxi-Direct Account		112,983.66	121,380.68
Cash At Bank - 2504		1,717.11	1,422.20
		<u>138,812.27</u>	<u>130,019.61</u>
<b>Receivables</b>			
Trade debtors		9,900.00	
		<u>9,900.00</u>	
<b>Total Current Assets</b>		<u><b>148,712.27</b></u>	<u><b>130,019.61</b></u>
<b>Non-Current Assets</b>			
<b>Property, Plant and Equipment</b>			
Educational Building Costs		123,239.04	
Motor vehicles - at cost		36,703.75	36,703.75
Less: Accumulated depreciation		(26,222.00)	(23,179.00)
		<u>133,720.79</u>	<u>13,524.75</u>
<b>Total Non-Current Assets</b>		<u><b>133,720.79</b></u>	<u><b>13,524.75</b></u>
<b>Total Assets</b>		<u><b>282,433.06</b></u>	<u><b>143,544.36</b></u>

The accompanying notes form part of these financial statements.



**Kalgoorlie Boulder Urban Landcare Group Inc**  
Detailed Statement of Financial Position as at 30 June 2017

	Note	2017 \$	2016 \$
<b>Current Liabilities</b>			
<b>Current Tax Liabilities</b>			
GST Payable Control Account		7,185.93	6,431.08
Input tax credit control account		(5,845.75)	(1,055.56)
PAYG Withheld		7,545.00	5,389.75
Superannuation Payable		3,908.80	3,639.18
		<u>12,793.98</u>	<u>14,404.45</u>
<b>Provisions</b>			
Annual Leave Provision		13,157.35	7,927.72
		<u>13,157.35</u>	<u>7,927.72</u>
<b>Total Current Liabilities</b>		<u><b>25,951.33</b></u>	<u><b>22,332.17</b></u>
<b>Total Liabilities</b>		<u><b>25,951.33</b></u>	<u><b>22,332.17</b></u>
<b>Net Assets</b>		<u><b>256,481.73</b></u>	<u><b>121,212.19</b></u>
<b>Accumulated Funds</b>			
Opening Balance		121,212.19	102,543.28
Net Income over Expenditure		135,269.54	18,668.91
<b>Total Accumulated Funds</b>		<u><b>256,481.73</b></u>	<u><b>121,212.19</b></u>

The accompanying notes form part of these financial statements.

# 2016-2017

## Promotional Posters







# NATIVE PLANT GROUP

*Last Sunday Of Each Month*

*9:00 AM - 11 AM*

*KBULG Nursery Karlkurla Park*

*Entrance from small car park on Tumbbarri Way*

**Come along and learn how to  
propagate local native plants**

**No experience necessary,  
everyone is welcome!**





# Kalgoorlie-Boulder Tree Planting Day

Don't forget to wear gloves and bring a trowel, water, hat and sunscreen

Free  
Sausage Sizzle & Prizes  
to Win!

Meet at  
Gatacre Drive -

On Airport Side  
Opposite O'Connor IGA

Sunday 31st July  
09am - 11am

PLANET ARK

TOYOTA

www.kbulg.org.au  
admin@kbulg.org.au  
Ph: 0418935498







# Kalgoorlie-Boulder Sustainable Garden Quest 2016

*Enter NOW for your chance to win a  
Gift Voucher for Bergie's Soils*



## CATEGORIES

**Residential**

*(Owner & Tenant Combined)*

**Commercial**

*(Business & Industry Combined)*

**Schools**

**Community Organisation**

**Edible Garden**

*(Vegetables/Fruit/Bush Tucker)*



This year's competition provides you with the opportunity to showcase your sustainable garden, with winners selected based on the overall appearance, colour and tidiness of gardens and verges.

For entry forms and judging criteria please email [admin@kbulg.org.au](mailto:admin@kbulg.org.au) or visit Lotteries House, Bergie's Soils or the Kalgoorlie Miner.

Follow us on the KBULG Facebook page for competition updates.

Entries / nominations close COB Wednesday 28<sup>th</sup> September 2016.

Judging occurs on Saturday 1<sup>st</sup> October

(Entrants need to provide garden access). Winners will be announced at the Spring Festival on Sunday 9<sup>th</sup> October 2016.



**Kalgoorlie Miner**





REDUCE - REUSE - RECYCLE

reconstructed

# RECYCLED ART COMPETITION

THEME = 'ANYTHING GOES'

## CATEGORIES

3D Sculpture

\$ 200 Cash Prize

2D Posters / Painting / Collage

\$ 200 Cash Prize

Junior Individual (13 and Under)

\$ 100 Cash Prize

Primary School Class entry

\$ 200 Cash Prize

High School Class entry

\$ 200 Cash Prize

Community Group

\$ 200 Cash Prize

Peoples Choice Award

\$ 200 Cash Prize



## ENTRY DETAILS

Entry forms and conditions will be available from the  
Western Australian Museum, Kalgoorlie-Boulder  
or KBULG email [admin@kbulg.org.au](mailto:admin@kbulg.org.au)



Registration Day Thursday 3rd November 2016  
Exhibition Opens Friday 11th November at the  
Western Australian Museum, Kalgoorlie-Boulder







# Kalgoorlie-Boulder Clean Up Day

**Just 1**  
Piece of rubbish can  
make a difference!

## Sunday 12th March

9am start (for approx 2hrs)

### Rotary Peace Park

Registration at the Carpark Crn of Dugan & French Streets  
(Please bring your gloves, hat, sunscreen and waterbottle)

## SAUSAGE SIZZLE AFTERWARDS AND PRIZES TO BE WON!

Thank you to our following sponsors

**CLEANAWAY**  
Making a sustainable future possible

**Kalgoorlie Miner**



For more information please contact KBULG on 0418 935 498 or [admin@kbulg.org.au](mailto:admin@kbulg.org.au)



reduce • reuse • recycle



**KBULG**

[www.kbulg.org.au](http://www.kbulg.org.au)

# THANK YOU

the Community of Kalgoorlie-Boulder,  
KBULG Staff, the KBULG Committee,  
Members, Supporters, Partners and Sponsors  
for an extraordinary 2016/2017!



*We are looking forward  
to many exciting  
Projects, Activities & Events  
with You  
in 2017/2018*

