



## CEO Update

Welcome to KBULG's Autumn Newsletter! The past few months have flown by, we've had Christmas/New Year leave and we are all back into the swing of another busy/fun year.

We have set the dates for all our events and have already hit the ground running. Jan and our wonderful volunteers (with a special thanks to John Gittings for all your help) have the nursery out at Karlkurla Bushland Park looking fabulous, if you get a chance to come out to the park whilst we are here, please drop in, say hello and have a look around.

Our Native Plant Group will be commencing again on the first Sunday of May - it is a 9am start and an 11am finish - you are invited to come along and help in the nursery and learn how to

propagate local native plants.

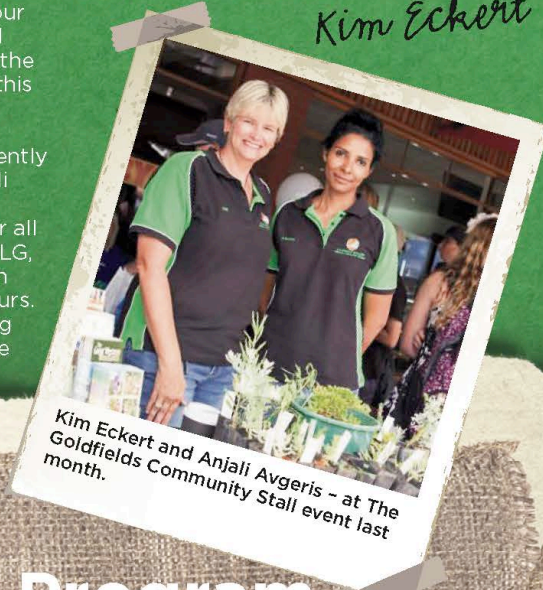
We have scheduled our "Clean Up Kalgoorlie-Boulder Day" on Sunday the 14th of June, so please join us for just a couple of hours, it's a worthwhile cause... helping our community and our environment (see the ad below for all the details). Please enjoy reading all the useful information and handy tips in this latest edition of KBULG news for the season ahead.

It is with a heavy heart that we recently said good bye to Anjali Avgeris. Anjali has been with KBULG for just over 2 years and I would like to thank her for all the work she has contributed to KBULG, we will really miss you Anjali and wish you well with all your future endeavours.

I would like to finish up by thanking our hard working staff, volunteers, the

community and ALL our sponsors. With your help, KBULG is achieving our vision of "working towards a Better Environment, Better Lifestyle for the people of the Goldfields".

*Kim Eckert*



Kim Eckert and Anjali Avgeris - at The Goldfields Community Stall event last month.

## Recycling Education Program

**Kalgoorlie- Boulder Urban Landcare Group along with the City of Kalgoorlie Boulder, CLEANAWAY and Keep Australia Beautiful worked together to educate Year 5 & 6 Primary schools kids across the community to focus on the importance of recycling and how to correctly recycle.**

One of the major issues contaminating successful recycling is plastic shopping bags!

Households tie their items for recycling in plastic shopping bags and place it directly in the big blue recycle bins, resulting in these items not being recoverable and going straight to landfill.

Plastic wrappers and shopping bags should never be placed in recycling bins as they get caught and damage equipment at the recycling plant.

Students learnt that Waste Management is a Social and Environmental issue and discovered that landfill affects ground water, wildlife, greenhouse gases and loss of resource once buried in landfill.

**The education program talked about The Three R's**

### REDUCE

- o Change your shopping habits, ie veggie and fruit
- o Say no to plastic bags
- o Zero waste lunch
- o Double sided photo coping/ printing
- o Rechargeable batteries

### REUSE

- o Clothing, hand me downs, op shops
- o Toys, bikes hand me downs
- o Craft, art work,
- o Milk cartons as seedling trays
- o Second hand shops, Tip Shop, Gum Tree, Garage sales

### RECYCLE BENEFITS OF RECYCLING

- o Saves resources
- o Saves energy
- o Extends to life of Landfill
- o Reduces the impact of Landfill on the environment

Each student was asked to become the recycling champion in their homes and given a yellow recycle bin to use as a collection point in their kitchens.

We hope to increase resource recovery, minimise waste and reduce contamination all while improving

recycling participation in Kalgoorlie-Boulder.

For further information about how you can become an active and effective recycler contact **CLEANAWAY on 13 13 39 or the City of Kalgoorlie-Boulder 9021 9600.**

## Ever wondered what you can do with your Unwanted Grey Shopping Bags?

Keep plastic bags out of your home recycling bins and take your plastic shopping bags to your major supermarkets such as Coles and Woolworths. Look for the plastic bag recycling collection bin or ask a staff member for assistance.

## PLACE THESE ITEMS ONLY IN YOUR YELLOW-TOPPED RECYCLING BIN LOOSE! NOT IN PLASTIC BAGS PLEASE

**PHONEBOOKS, NEWSPAPER, OFFICE PAPER, MAGAZINES AND JUNK MAIL**

Do not bundle or tie and no plastic bags please.

**GLASS BOTTLES AND JARS ONLY**

No china, pottery, porcelain or other types of glass. No lids.

**CARDBOARD**  
Cereal, soap powder boxes, packing boxes etc.

**STEEL AND ALUMINIUM CANS INCLUDING AEROSOLS, ALFOIL TRAYS (CLEANED)**

Caps removed. No other metal objects of any kind.

**MILK AND JUICE CARTONS**

Please rinse.

**PLASTIC BOTTLES AND CONTAINERS**

Soft drink, milk and detergent bottles (lids off) all plastic containers and bottles with the recycling symbol on the bottom or side. Please rinse.

**REMEMBER**  
Please only put the correct items in your bin.

## DO NOT PLACE THESE ITEMS IN YOUR YELLOW-TOPPED RECYCLING BIN

There are no markets for these materials. Putting unwanted items in your recycling bin 'clogs' the sorting system and slows it down. Items are sorted by hand as well as by machine.

**NO HOUSEHOLD FOOD SCRAPS AND WRAPPINGS**

**NO DISPOSABLE NAPPIES**

**NO PLASTIC BAGS**

No plastic shopping bags

**NO BATTERIES OR OTHER METAL OBJECTS**

**NO RUBBER OR LEATHER ITEMS OF ANY KIND**

**NO GARDEN WASTE, TIMBER OR BUILDING MATERIAL**

**NO CLOTHING NO OIL, ACID OR CHEMICALS**

(No liquid of any kind)

**NO CROCKERY, POTTERY, PORCELAIN OR PLATE GLASS**

(Glass bottles and jars only)

**REMEMBER**  
Please only put the correct items in your bin. Loose - NOT in plastic bags!

**SORT IT**

**CHECK IT**

**KEEP IT CLEAN**

**SORT IT**

**CHECK IT**

**KEEP IT CLEAN**





## LOCAL PLANT PROFILE

**Size and Form:** Erect shrub, reach 2 metres high x 2 metres wide.  
**Flowers:** White to yellow flowers occurs singly in the leaf axils and are tubular in shape to about 25 mm long.  
**Leaves:** Thin bright green leaves.

## Eremophila Racemosa

**Habitats:** Red to yellow sands, granite, laterite or clay soils on undulating plains, claypans, salt lakes and scree.  
**Interesting Facts:** Flowering time is from spring to early summer. Prefers well drained soils and a full sun position. Frost and drought tolerant.



[www.kbulg.org.au](http://www.kbulg.org.au)

## Become a lean green shopping machine

**DID you know that by making small changes in your shopping habits you can make a big impact on the environment? Being environmentally conscious when you shop is not only good for the environment it can be good for your wallet as well. Shopping 'green' doesn't have to take any extra time and effort, all it takes is a little environmental know-how.**

Here are a few tips to get you well on the way to becoming a lean green shopping machine:

- Take your own reusable bags or basket shopping. Say NO to plastic bags.
- Buy fresh food and fruit loose.
- Purchase reusable, long-life and rechargeable items. Avoid buying disposable, single-use products such as disposable nappies and plastic plates.
- Rent or borrow equipment you may only use a few times, such as trailers, ladders and power tools, or buy them second hand. You will save money and reduce

the amount of rubbish created.

- To reduce packaging, buy in bulk and purchase long-life goods or buy concentrated products.
- Buy products made from recycled materials and avoid excess packaging. Choose products that come in recycle, refillable or reusable packaging.
- Choose the container that can be most easily recycled.
- Buy from manufacturers with a good environmental



track record and check product labels or environmental certification.

- Try to buy locally if possible. Transporting products from around the world contributes to air pollution and greenhouse gas emissions.
- Always write a shopping list and stick to it. Avoid buying more food than what you need.



*Cuttings*  
Now is the best time to make new plants from cuttings.



## Attracting birds to your garden

Australia is home to a large and diverse range of bird species. Many of us enjoy the colour and song that birds provide, but how do you go about attracting them?

Three key things need to be in place to attract native birds:

### Plant Variety

When considering what type of plants to use, it is important to create a community of plants with different heights, shapes, leaves and flowering times. This will make your garden more attractive to a wider variety of birds.

### Food Supply

Different bird species have different dietary requirements, but birds generally eat a combination of

nectar, insects, fruit or seed. Planting indigenous plants is the best option as these plants provide resources that native birds can identify, having developed associations with them over hundreds or even thousands of years.

### Fresh Water

A bird bath is the easiest way to supply water for birds in a residential setting. A basin with shallow edges and a deeper centre is important as it allows large birds to bathe and drink without drowning the smaller birds! Alternatively, creating a pond where insect larvae, frogs and fish can live will further enhance the habitat value of your garden.

**HEDGES** Trim hedges before the onset of winter to keep them compact and bushy from ground level.



## Illegal rubbish dumping

Despite free tip access, some Kalgoorlie-Boulder residents are disposing of their rubbish in our native bushland.



Dumping this rubbish on private or public land without authorisation is illegal and degrades our environment.

Furniture, packaging and organic waste are amongst the most common types of illegally dumped rubbish, although construction materials, scrap tyres, abandoned cars and hazardous waste are also found.

The environmental impacts of illegal dumping are significant.

Not only does illegal dumping result in our bush land looking unsightly but it is also a potential fire hazard, smothering native vegetation through the introduction of

unwanted cuttings, seeds and weeds. Dumped rubbish can leach contaminants into our bushland, harming our plants and animals and damaging our landscape. Illegal dumping can be prosecuted under the Litter Act 1979.

If you see an illegal dump site or see someone dumping rubbish, you can report it to the Rangers Department at the Kalgoorlie-Boulder City Council, who will be able to investigate the matter further.



## Recycling Computers and Accessories



### The Problem

An estimated 29 million televisions and computers across Australia reached their end-of-life, with only around 10% of these likely to have been recycled.

The inappropriate disposal of unwanted televisions, computers and other e-waste is a problem not only for the environment but also for human health due to the hazardous materials they contain.

Televisions and computers also contain valuable non-renewable resources like gold, steel, copper, zinc and aluminium.

When electrical items are sent to landfill or recycled incorrectly, these resources are wasted, along with the water, oil and energy required to produce them.

### The Revolution

Following the introduction of the National Television and Computer Recycling Scheme manufacturers that make and/or import televisions and computers must pay for the recycling of these products at the end of their life.

The Scheme requires importers and manufacturers to join and fund industry-run arrangements, such as the not-for-profit organisation TechCollect, to establish recycling drop off points around Australia.

40,000 tonnes of televisions, computers and computer products were recycled under the scheme in 2012-13; nearly double the volume of the years before.

Australians are among the

highest users of new technology in the world and purchase over 2.4 million computers every year. This makes electronic waste or e-waste, including computers and accessories, a growing problem.

Computers are ideal for recycling due to their large volumes, high toxicity and good resource recovery potential of non-renewable resources like tin, nickel, zinc and copper.

### Council services for Computers

City Of Kalgoorlie-Boulder has listed the following locations where you can recycle your computers.

1. Drop off Facility - C.D. Dodd Scrap Metal Recyclers
2. Drop off Facility - Simsmetal
3. Drop off Facility - Yarri Road Refuse Facility

Please refer to [www.recyclingnearyou.com.au](http://www.recyclingnearyou.com.au) to find out more about what you can recycle.

## AUTUMN Gardening Tips

It's now the end of the long, hot summer days and a great time of the year to get the jobs done that have been put off because of the heat.

Autumn is a great time to do garden improvement and maintenance, many plants have grown over the summer and need to be shaped and thinned. You can also sharpen your tools, improve your soil and mulch the garden beds. A little time spent on jobs now, will help your garden flourish in Spring.

**PRUNING** Get out the secateurs and shears, tidy your plants, get rid of dead wood and cut back vines.

**LAWN** Now is the time to feed your lawn. Use a slow release lawn food to develop a strong root system and get thicker grass. Aeration compacted areas of the grass where nothing grows is also a great idea. Grab a pitchfork, jab it in to the lawn and loosen the ground. You might also need to spread lawn seed.

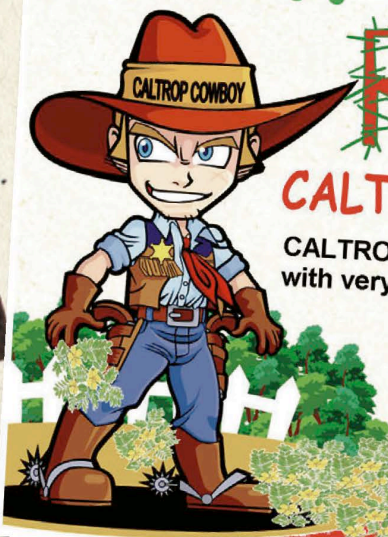
**GARDEN BEDS** also appreciate aeration. Insert a garden fork as far as you can into the soil and move it back and forth slightly. Loosening soil helps encourage deeper and stronger root growth, it also helps with water dissemination. Do this

around the area underneath the outer canopy of trees where rain or dew drips onto the ground.

**CITRUS TREES** Autumn is the time to mulch your citrus trees. A mulch of cow manure in Autumn is beneficial and also a surface mulch of Lucerne added after each application of fertiliser will ensure that moisture is retained in the soil.

Remember that Lucerne is a most important product as it adds nitrogen to the soil, promoting worm activity and keeps weeds down. It also helps to retain moisture and eventually breaks down to a wonderful compost.

## RIP it out NOW! Before it RIPS INTO YOU!



**CALTROP is taking over our City! We need your HELP.**

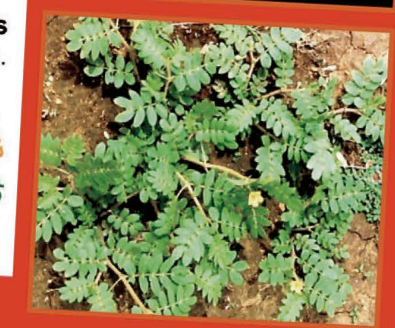
**CALTROP** is a nasty, ground covering noxious weed with yellow flowers that produce seeds with very prickly spines. Known to attack the innocent feet of adults, children and pets alike.

Approach with caution, be sure to have well equipped weaponry such as gloves and a shovel. Completely remove, collect & bag all roots, plants & seed material to prevent escape. Place sealed bag into your green wheelie bin.

For more info contact Kalgoorlie-Boulder Urban Landcare Group

**Kalgoorlie Miner**

[www.kbulg.org.au](http://www.kbulg.org.au)





Keep Australia Beautiful

**BIN IT**

You know it's the right thing to do

"I'm in my car, and one cigarette butt out the window isn't going to make a difference"

"It's only a small bit of rubbish and no one will notice it"

"It's an apple - and that's bio-degradable or a bird will get it"

"Someone else has done it, so that makes it ok for me to do it as well"

**It's only a cigarette butt. Somebody else will pick it up.**



Keep Australia Beautiful published the National Litter Index for the year, statistics show, Western Australia in 2013 - 2014 indicate a downward trend in littered items, with the lowest record of littered items in nine years and a reduction in litter volumes from the previous year.

While significant gains have been achieved with the reduction in litter levels by item and by volume the litter problem in Western Australia continues to be greater in magnitude than a number of other states and figures suggest that the littering and dumping of large items is still a concern.

Therefore, there is considerable work to be done to achieve a cleaner and safer state, by working collaboratively with community groups, government and businesses and continuing to inform and encourage the community to change their behaviours.

**What we know about littering**

- Litterers come from all age groups.
- Younger people are more likely to litter when in groups.
- Littering is worse in littered and graffiti areas.
- People litter if others are doing it too and it's seen as normal
- Feedback from the community

suggests that the roadside litter is an increasing problem. Especially littering of takeaways containers, bottles and cans.

• If areas are kept clean, they are more likely to stay clean and be littered less.

Littering is not acceptable and appeals to those people who perhaps might justify littering with the excuse...

Regardless of the reason we might have...the message is, it's actually not okay to litter. In fact, we should always Bin It - why? Because we know it's the right thing to do.

How can you get involved and promote the campaign message? Join the fight against litter and do your bit.

To learn more about the 'Bin It' anti-litter message you can email: [kabc@kabc.wa.gov.au](mailto:kabc@kabc.wa.gov.au), telephone: 08 6467 5339 or visit: [www.kabc.wa.org.au](http://www.kabc.wa.org.au) to obtain free 'Bin It' resources.

Watch the ad on you tube: <http://www.youtube.com/>

**THE NATIONAL DIRTY DOZEN:  
Top littered items across Australia per 1000m<sup>2</sup>**

- |   |  |
|---|--|
| 1. Cigarette butts (23 items)                   | 7. Paper/Paperboard - Food container or utensil (1 item) |
| 2. Paper/Paperboard (8 items)                   | 8. Metal: Non-alcoholic beverage container (1 item)      |
| 3. Plastic: Other (5 items)                     | 9. Plastic: Non-alcoholic beverage container (1 item)    |
| 4. Plastic: Food container or utensil (4 items) | 10. Glass: Alcoholic beverage container (1 item)         |
| 5. Metal: Other (3 items)                       | 11. Paper/Paperboard: Cigarette packets (1 item)         |
| 6. Miscellaneous (2 items)                      | 12. Glass: Other (0.5 item)                              |

**Time to renew your membership!**

Join Kalgoorlie-Boulder's leading community environment group

Name: \_\_\_\_\_ Date: \_\_\_\_\_  
Address: \_\_\_\_\_  
Postcode: \_\_\_\_\_  
Phone: \_\_\_\_\_  
To receive KBULG news the environmentally friendly way, please provide us with your email address  
Email: \_\_\_\_\_

**MEMBERSHIP CATEGORY:** (tick one)

- ☐ Business \$100  
☐ Financial Membership\* \$10  
☐ Social Membership (free) (Individual, junior or family)

Number of Adults: \_\_\_\_\_ Children: \_\_\_\_\_

\*Financial Membership entitles you to have voting privileges and 10% off KBULG purchases.

**If you volunteer with KBULG, here are some of the projects you can be involved in:**

- Community Tree Planting Days
- Regeneration Zones
- Recycling Clean Up Days
- Bushwalks
- Gardening with Native Plants
- Flora and Fauna

☐ I am interested in volunteering (please tick)  
Comments: \_\_\_\_\_

**RETURN TO: KALGOORLIE-BOULDER  
URBAN LANDCARE GROUP  
PO Box 1038, KALGOORLIE WA 6430  
Phone: 0418935498  
Email: [admin@kbulg.org.au](mailto:admin@kbulg.org.au)**

**Coming Events**

**Sunday 3 May 2015**

Native Plant Group at Karlkurla Bushland Park  
- KBULG Nursery, Tumberri Way Entrance  
9am start - 11am finish

**Sunday 7 June 2015**

Native Plant Group at Karlkurla Bushland Park  
- KBULG Nursery, Tumberri Way Entrance  
9am start - 11am finish

**Sunday 14 June**

Kalgoorlie-Boulder Clean Up Day  
9am-11am - Meet at Hannans  
Boulevard Shopping Centre

**COMPOST**

**AWARENESS WEEK**

**4 - 10 MAY 2015**

*Better Soil, Better Life,  
Better Future*

**IF YOU don't have a compost heap, it's a GREAT time to start one! Autumn leaves are a fantastic source of nutrients and organic matter, and will soon be in good supply.**

Composting is the decomposition of plant remains and other once-living materials to make an earthy, dark, crumbly substance that is fantastic for adding to house plants or enriching garden soil. It is an ideal way to recycle your yard and kitchen wastes, and is a critical step in reducing the volume of garbage needlessly sent to our local landfill for disposal. It's easy to learn how to compost.

There are many options for containing your compost. Some people choose to go binless, simply building a compost pile in a convenient spot on the ground. Or you could build a bin from materials such as recycled pallets, or 2x4's and plywood.

And, of course, there are various ready-made compost bins for sale. Please give us a call if you'd like more information on composting.

**60**

**EARTH HOUR**

**Saturday  
March 28, 2015**

**08:30-09:30pm  
Local Time**

*See your world  
in a whole new light*

**[www.earthhour.org](http://www.earthhour.org)**

**Thank you to all our valued sponsors**

