

2013-2014

Annual Report



Educate  *Communicate*  *Participate*



**KALGOORLIE-BOULDER
URBAN LANDCARE GROUP INC**

ABN: 72-037-460-472

KALGOORLIE WA 6430

PO Box 10381, KALGOORLIE WA 6430

Ph: 0418 935 498

Email: admin@kbulg.org.au

www.kbulg.org.au



Contents

Executive Summary	2	Clean Up Kalgoorlie-Boulder Day	12
CEO Report	3	Promoting Local Plants	13
List of Achievements	4	Native Plant Guide	13
Sponsors & Partnerships	5	Waterwise Gardening	13
Management of KBULG	7	Sustainable Garden Quest	14
Environmental & Community Achievements		Annual Tree Planting Day	15
Measurable Outcomes	8	Reconstructed Art Competition	16
Awards	9	Karlkurla Community Nursery	17
Projects & Activities		Native Plant Group	17
Membership	10	Annual Caltrop Weed Education	18
Junior Landcare	10	Regeneration Zone Management	18
Newsletter	11	Karlkurla Bushland Park	19
Media	11	Karlkurla Dreaming Cultural trail	20
Website	11	Chairperson's Report	21
Displays, Expos and Festivals	12	Conclusion	22
		Financial Report	
		Independent Auditors Report	23—28
		Promotional Posters	29



Executive Summary

Kalgoorlie-Boulder Urban Landcare Group (KBULG) is a community based Environment and Conservation Organisation. The group has been working to improve the environment in and around Kalgoorlie- Boulder for over 40 years. KBULG is a registered Charitable Organisation.

VISION

KBULG's vision is to work for a "better environment and better lifestyle" for the people of Kalgoorlie-Boulder through "collaboration, education and participation".

1. To remain the leading environmental group in the goldfields.
2. To facilitate Kalgoorlie-Boulder becoming a more environmentally aware community.
3. To inspire the Kalgoorlie-Boulder community to be environmentally active.
4. To ensure the sustainability of KBULG.



CEO Report

I am pleased to present the Annual Report for Kalgoorlie-Boulder Urban Landcare Group (KBULG) for the financial year ending 30 June 2014.

KBULG has once again had a successful year, achieving all goals, completing all projects, programs and activities we set out to do, and more! This year has seen many changes for our organisation and we continue to move from strength to strength. All our annual community awareness/educational events are supported and attended by many, and we have increased our presence in the city by also supporting other organisations and their events.

It's been just over a year since we moved the administration office from Lotteries House to the Community Nursery located within Karlkurla Bushland Park. This strategic business decision has enabled our nursery and administration staff to work more closely together, it has allowed for cross-training to happen, the nursery is now open to the public and it has unified the team.

This coming financial year will see KBULG upgrade our reticulation system to allow automated watering, rather than the labor intensive hand watering. We will be again hosting our annual events, projects and activities, whilst seeking to grow our involvement in the community and our extend our education programs, including cultural heritage and awareness and our Great Western

Woodlands. KBULG will be growing our community nursery, with the view of becoming more self sufficient in the future, so that we do not rely so heavily on the funding we currently receive.

Our support and volunteer network is growing exponentially. Thank you so much for your motivation and dedication, helping us to achieve our goal of creating a "better environment and better lifestyle" for the people of the Goldfields.

I would also like to sincerely thank our KBULG staff (past and present), the committee, members and sponsors (both financial and in-kind). I really appreciate your support and look forward to working with you this year to achieve many more GREAT things for our community and future generations.

Kim Eckert



Achievements 2013/2014

JUNIOR LANDCARE

Kalgoorlie-Boulder Primary schools were involved in the Junior Landcare Programme this year through KBULG conducting Bushwalks through Karlkurla Park and Tree planting projects with the schools and working with Conservation Volunteers in the weed management program at Karlkurla Bushland Park. KBULG has 121 classes enrolled in the program.

NEWSLETTER

Continued to produce a seasonal newsletter which is published quarterly as a full page centre spread in Saturday's Kalgoorlie Miner. With approx 15,000 copies printed, we are reaching a wide audience.

RECONSTRUCTED ART COMPETITION

The rECONstructed Art Competition & Exhibition encouraged members of the community to source and utilise waste products and materials to create innovative pieces of art. Re—duce—Reuse—Recycle, celebrated as part of National Recycling week.

CLEAN UP DAY

KBULG hosts "Clean Up Kalgoorlie-Boulder day" in conjunction with Clean up Australia Day. The community cleaned up Bushland in Hannans North behind Hannans Boulevard. It was a great exhibition of community spirit.

TIDY TOWNS

KBULG entered Kalgoorlie-Boulder into the Tidy Towns Sustainable Communities 2013 awards and won Regional Award for Natural Environment Conservation Central Wheatbelt—Goldfields.

SUSTAINABLE GARDEN QUEST

Kalgoorlie-Boulder Urban Landcare Group launched its annual Sustainable Garden Quest in conjunction with major sponsors, Bergie's Soils, Western Power and the Kalgoorlie Miner. Competition was focused on all aspects of creating and maintaining a sustainable garden, the overall appearance, colour and tidiness of gardens and verges.

COMMUNITY TREE PLANTING DAY

Co-ordinated the Annual Community Tree Planting day in conjunction with the City of Kalgoorlie-Boulder and core sponsors. The site for 2013 was Boomerang Crescent in South Kalgoorlie. 3000—4000 plants were planted by over 150 volunteers.

NATIVE PLANT GROUP

Participants in the KBULG Native Plant Group continued to propagate local natives from seed & cuttings. Plants grown by the group were distributed to local schools and community groups free of charge. The Native Plant group meets on the first Sunday of every month.

KARLKURLA BUSHLAND PARK

KBULG, continues to support Kalgoorlie-Boulder City Council with the Management of the Park, along with bush walks, tree planting and school projects. 'You are Here' and information about the Great Western Woodlands signage was also installed in the park.

GIFSA

KBULG continues to support and Goldfields Individual Family Support Association (GIFSA) through encouraging people living with disabilities and their carers to further develop interests & training opportunities at the Karlkurla Community Nursery. KBULG also recently recruited a GIFSA client with the assistance of a Support Worker in the position of Casual Nursery Officer.

SCATTER THE SILKY PEAR

This program enables tourists to pick up a brochure and a packet of Karlkurla seeds (for a small donation) from the Kalgoorlie-Boulder Tourist Centre and scatter them in Karlkurla Park. Funds from seeds sold go to projects within Karlkurla Park.

REGENERATION ZONES

A series of fenced Regeneration Zones encompassing an area of approximately 3,500 hectares. Damaged areas of the fence line was replaced this year by KBULG committee member Graham Campbell as a direct result of vandalism and illegal use of the regeneration zones for recreation and illegal dumping. Continued awareness has been raised through the media and the KBULG newsletter, educating the community to preserve the natural environment.

PUBLIC AWARENESS AND PROMOTION

KBULG continues to get out and about within our community promoting the local environment. This is achieved by attending community events like the Spring Festival, Kids Fest, Lighting of the Xmas tree, schools and public/group forums and KBULG's own education and conservation events and projects.

GOLDFIELDS EDUCATION SUPPORT CENTRE

KBULG set up a weekly program on Tuesday's for two high/special needs High School groups of 15 students and their carers to come out and volunteer in the nursery

RECYCLING

KBULG continues to support the City of Kalgoorlie-Boulder with public awareness, promotion and education relating to recycling and issues surrounding the waste cycle. KBULG continues to lobby for business and commercial recycling.

MEMBERSHIP

KBULG continues to promote its community services throughout the community and constantly strive to welcome new members. In 2013-2014 we had over 500 members.

Sponsors and Partnerships

KBULG could not achieve our goals without the support of our core sponsors: The City of Kalgoorlie-Boulder, Barrick / Northern Star Resources Kanowna Belle, KCGM, Western Power, and LandCorp.

These organisations work in partnership with KBULG helping us to achieve our vision of working for a "Better Environment and Better Lifestyle" for the people of the Goldfields.

Our sponsors provide the ongoing funding required for all of KBULG's projects including Junior Landcare, Tree-planting, KBULG Newsletter, Karlkurla Bushland Park, Karlkurla Community Nursery, Native Plant Group, Regeneration Zone Management and numerous other projects and activities and general administration of the group.

Our core sponsors are integral to maintaining the profile and respect that we hold within our community.

KBULG has strong links and working relationships with all of our core sponsors, mining companies and businesses in this region, who provide in-kind support to our programs and initiatives.

All of our projects involve partnerships that provide mutually beneficial outcomes.

KBULG regularly acknowledges the vital role of sponsors to its operations.

KBULG'S CORE SPONSORS



Department of
Parks and Wildlife



SPONSORS & CONTRIBUTIONS - 2012/2013

City of Kalgoorlie-Boulder	\$75,000
Barrick Kanowna / Northern Star Resources	\$20,000
KCGM	\$20,000
Western Power	\$15,000
LandCorp	\$5,000

OTHER GRANTS AND SPONSORSHIP

NRM Rangelands WA	\$12,000
GNRBA	\$2,000
Rotary Club Kalgoorlie	\$2,000

OTHER SPONSORS / IN KIND DONORS

Bergie's Soils
The Kalgoorlie Miner
Local DPaW branch
Nindethana seeds
Red Dirt Seeds
Rotary Club of Kalgoorlie
Jess Paterson (Admin Support)
Colin Harkins (IT Support)
Royalties for Regions
Downer EDI
Onsite Rental Group
Orica Greenedge
Harvey Norman
McDonalds
Bunnings
GEMG
Rock Paper
Coles
Video Ezy

reduce • reuse • recycle



KBULG

www.kbulg.org.au

Management of KBULG

The KBULG committee is made up of a large and diverse group of individuals, and includes representatives from government, local industries and interested members of the community.

Kalgoorlie-Boulder Urban Landcare Group co-ordinates and promotes many projects and are involved with many activities around the City of Kalgoorlie-Boulder. This is all co-ordinated from the KBULG office, which is now located at Karlkurla Bushland Park.

KBULG employs a Fulltime paid CEO. Kim Eckert has been employed within this position since January 2013. Kim is responsible for the day-to day management and coordination of the organisation, under direction from the KBULG committee.

Part-time and Casual staff along with Volunteers assist with the various projects, including; the Junior Landcare Program, Clean up Australia day, guided bushwalks, Community tree planting days and helping out on the KBULG stall at displays and expo's, Administration and Nursery operations.

The KBULG CEO is responsible for liaising with a wide cross section of the community. The CEO ensures projects are planned, implemented, maintained and monitored. Major tasks include project development and funding, public education and co-ordination of community events. The staff also liaise with the Council, schools, government departments, sponsors and the media on local landcare projects and issues.

The elected Committee guides and supports the KBULG CEO with any issues that arise and with project management decisions as required. The committee also provides strategic planning and direction for the group.

Committee Members 2013/2014

Executive Committee

Chairperson

Peta Osborne (Acting)

Vice Chairperson

Jim Thompson
Community Representative

Treasurer

Rod Botica
Community Representative

Secretary

Suzie Williams
City of Kalgoorlie Boulder Representative

Committee Members

Graeme Campbell	Community
Monika Dvorakova	Community
Jennifer Jackson	DPAW
Peter Sweeney	Community
Lynne Strudwicke	Community
Jennifer Thompson	Community
John Rees	Community

Sponsor Representatives

Jess Li / Jacqui Niemand	KCGM
Adrian Lally	Northern Star Resources

KBULG STAFF

Kim Eckert	CEO
Anjali Avgeris	Landcare Officer
Jan Hendren	Nursery Officer
Brenden Westbrook	Nursery Officer
John Mathew	(GIFSA) Support Worker

Environmental & Community Achievements

- November 2009 KBULG held it's very first recycled Art Competition and exhibition called "rECONstructed". In 2013 the competition and exhibition was viewed by thousands of people at the Goldfields Arts Centre. The competition was highly successful with over 30 entries received from professional artists, schools and community members.
- Approximately 150 people planted around 3000-4000 trees, shrubs and ground covers along Boomerang Crescent in South Kalgoorlie at KBULG's annual Community Tree Planting Day in 2013.
- Over 40,000 plants were grown by the Native Plant Group & Nursery volunteers, supplementing our plant numbers at tree planting events around town and allowing thousands of plants to be donated to local community groups, schools and the community.
- 2013 saw many gardening enthusiasts enter their garden in our annual Sustainable Garden Quest Garden Competition. The gardens looked fabulous and judges were very impressed.
- Over 800 students participated KBULG's Junior Landcare Program in 2013/2014. Students participated in a number of environmental activities including tree planting, seedball making, bushwalks, creating native gardens, and most recently joined the Conservation Volunteers program which targeted weed management in Karlkurla Bushland Park.
- Updating promotional and community educational material over this time has been a key focus. KBULG is currently in the process of updating a number of educational brochures and producing new interpretive signage for Karlkurla Bushland Park.



Environmental & Community Achievements

(continued)

- Continued distribution of the Goldfields Waterwise Garden Poster and Local Native Plants pamphlet. The free pamphlet compliments the poster well as it provides a more detailed look at local Goldfields Waterwise Plants ranging from Mallees & Trees through to ground covers and Dwarf Shrubs. Both the poster and the pamphlet are great resources for anyone wanting to grow a Native garden.
- KBULG continues to promote the Great Western Woodlands through conducting educational bushwalks for school kids in the community and visiting schools from the region, at community events and through donating and distributing the Great Western Woodlands field guide & pamphlets to schools, sponsors and community partners.
- All outcomes were achieved within this reporting period across all projects and activities. All measurable outcomes relating to projects and activities have been enhanced from previous years.



AWARDS & CERTIFICATES

This year, KBULG received a certificate of appreciation for supporting and participating in the City Kalgoorlie-Boulder community events

- Lighting of the Xmas tree
- Kids Fest
- Heart of Gold Festival

KBULG entered Kalgoorlie-Boulder and won the Tidy Towns Sustainable Communities award in 2013 for Natural Environment Conservation Central Wheatbelt-Goldfields!



Projects and Activities (continued)

MEMBERSHIP

KBULG membership & friends of KBULG was established in 2003. In 2013/2014 we had approximately 500 members. KBULG members demonstrate their commitment to achieve a better environment for the Goldfields and the people who live here by volunteering their time to help at KBULG events and also lending a hand out at the nursery which KBULG is very thankful for.

KBULG JUNIOR LANDCARE

KBULG's Junior Landcare Program (JLP) continues to expand. The aim of the program is to keep teachers and students aware of, and involved in dealing with local environmental issues. KBULG visits all Kalgoorlie-Boulder schools at the beginning of the year and informs staff about the Junior Landcare Program. Teachers are then encouraged to enrol their class in the program and participate in various activities throughout the year.

KBULG regularly send updates, information and reminders via email, Facebook and our website.

Through the Junior Landcare Program, students learn to appreciate local flora and fauna and are made aware of bushland management issues. They are encouraged to think about these issues and ways they can help manage and resolve these issues.

This year students in the program participated in a range of KBULG activities including tree planting, seedball making and Bushwalks at Karlkurla Bushland Park, planting native gardens in their school grounds and recycling activities, making recycled art for the rECONstructed Art Competition. Teachers and students were given the option to do different and extra activities as

long as they follow in the environmental theme.

The Junior Landcare Program is sponsored by Barrick Kanowna Belle / Northern Star Resources whom provides both funding and on ground support.

KBULG works closely and supports schools with special needs and high needs kids, by running programs at Karlkurla Bushland Park Nursery. Activities involve seed collecting, seedballing, identification of invertebrates living in the park, propagating, park rehabilitation and other related education programs. This is done with the aim of developing the skills and children's interest in environment and conservation programs.



Projects and Activities (continued)

NEWSLETTER

KBULG continued to produce its quarterly community newsletter in 2013/2014.

The aim of the newsletter is to inform the local community of KBULG activities, upcoming events and how they can be involved, and to increase community awareness of local environmental projects and issues.

The newsletter consists of a four page, colour, centre spread which is featured in a Saturday edition of the Kalgoorlie Miner every quarter. The newsletter continues to receive fantastic feedback from the community.

Copies of the latest issue of the newsletter are available for download from the KBULG website for community members who missed newsletters in the paper.

MEDIA

KBULG regularly has articles or segments in the local media and in 2013/2014 KBULG featured in over 106 articles in local papers! KBULG aims to inform the community of its activities through regular Media Releases and contact with; the Kalgoorlie Miner, Radio West, ABC radio, GWN, WIN TV and articles in Rangelands NRM e-Newsletters. This results in feature articles, frequent publicity in the local news & regular interviews with KBULG staff.

KBULG aims to receive exposure from a variety of sources ranging from news stories through to general interest and community announcements. This encourages participation in local landcare activities resulting in greater community involvement and awareness of KBULG's projects and the local environment.

WEBSITE

The website is a great tool which is used to provide information about KBULG's recent events, upcoming activities, sponsorship information and how people can be involved with KBULG.

The website allows the community to find out more about KBULG. The 'Downloads' page allows people to download copies of our pamphlets, newsletters and annual reports, media report plus more. KBULG receives many new members through the online membership form, which allows visitors to join KBULG directly from the site. The website can be viewed at www.kbulg.org.au



Projects and Activities (continued)

DISPLAYS, EXPOS AND FESTIVALS

KBULG set up many displays and promotions throughout the 2013/2014 period. Goldfields Spring Festival, Kids Fest and Heart of Gold are just to name a few. Public displays enable KBULG to raise community awareness on local environmental issues and provide educational environmental materials and advice. It also gives us an opportunity to promote the many environmental projects and activities we conduct throughout the year.



CLEAN UP KALGOORLIE-BOULDER DAY

Kalgoorlie-Boulder Urban Landcare (KBULG) Group hosts many clean-up days throughout the year. Clean Up Australia Days are KBULG's biggest clean-up days due to the nation advertising. Being held at different locations in and around the City. Due to the heat in Kalgoorlie, KBULG usually hosts the event in May/June each year.

This year Clean Up Australia Day was in early June. Community members came out on their Sunday morning and helped clean up the litter affecting the bushland and native animals in Hannans North behind Hannans Boulevard.

Bags, card board boxes, tyres, packing materials, rusty tin cans, plastic bags, aluminium cans, bottles, take away containers, furniture and shopping trolleys were just some of the rubbish items collected on the day.

Kalgoorlie-Boulder Urban Landcare Group also distributed rubbish bags to community members who wanted to participate cleaning up other sites approaching the town.

Northern Star Resources funded a free BBQ for the community volunteers on the day and Harvey Norman, Bunnings and McDonalds donated prizes to give away. These kind donations encouraged and supported the efforts of volunteers helping KBULG care for our natural environment.

The Clean Up Australia Day events are a great way to foster community spirit and increase civic pride.

Projects and Activities (continued)

PROMOTING LOCAL NATIVE PLANTS

KBULG receives many phone calls about gardening with local native plants from new and existing residents. Residents are supplied with lists of native trees and shrubs suitable for planting in a Goldfields Garden plus our pamphlets and other reference material. KBULG actively maintains and provides stock lists of nurseries providing and selling local Goldfields native plants.

NATIVE PLANT GUIDE

The Native Plant Guide was launched late May 2003 and continues to be well received. The book quickly became one of THE books to have if you wanted to learn or identify local goldfields plants.

KBULG produced the guide for local residents, school children and visitors to find out more about the native trees and shrubs of the Goldfields. The book focuses on the flora in Karlkurla Bushland Park and the Goldfields and links in with the existing signage in Karlkurla Park. 65 types of plants are featured in the book with a colour photo of each of the species. The book includes a description of each plant including its leaves fruit and flowers, the plants common, scientific and Aboriginal name, a dial showing flowering times, a map indicating where it can be found, and interesting facts and uses of the plant.

The Native Plant Guide is continuing to sell well and they are available from the KBULG office, Kalgoorlie Visitors Centre, Western Australian Museum Kalgoorlie-Boulder, Loopline Museum Boulder and the Department of Parks and wildlife Kalgoorlie.

WATERWISE GARDENING

KBULG's Waterwise Plants poster and Gardening with Local Native Plants pamphlet were completed and launched by Environment Minister, Dr Judy Edwards in November 2003. These fantastic resources continue to be distributed within the community and afar.

KBULG gives community members the opportunity to purchase a selection of local native plants at some Boulder Market Days and at community events throughout the year such as the Goldfields Spring Festival. KBULG staff and volunteers are on hand to provide information and advice on how to create Waterwise gardens and answer any questions the community might have.



Projects and Activities (continued)

SUSTAINABLE GARDEN QUEST

Each Spring KBULG runs a Sustainable Garden Quest to promote, educate and raise public awareness on the use of water wise plants and efficient water use within Kalgoorlie-Boulder. The competition is judged across 5 Categories: Residential - owner maintained, Residential - tenant maintained, Commercial and Community. Edible Garden was a new category introduced in 2013. Gardens are assessed on their overall appearance, colour, tidiness and most importantly water efficiency.

The 2013 Sustainable Garden Quest had many nominations across the categories with garden styles varying greatly; native, cottage, cactus, formal and informal gardens were all presented for judging.

The judges were pleased to see many Kalgoorlie-Boulder residents making an effort to have gardens which are suitable to our semi-arid climatic conditions, but are also attractive, well-maintained and aesthetically pleasing. It was also great to see that a number of residents are also maintaining their verges and reducing or removing altogether, high water use lawns and gardens.

Bergie's Soils were the major sponsor of the 2013 competition, donating \$1500 worth of prizes including gift vouchers and trailer loads of mulch, Western Power and the Kalgoorlie Miner also sponsored the competition, providing free advertising.

ANNUAL TREE PLANTING DAY

Each year KBULG organises a community Tree Planting Day to help re-vegetate barren areas of land in and around Kalgoorlie-Boulder. The 2013 Annual Community Tree Planting Day took place along Boomerang Crescent, South Kalgoorlie.

Community response was once again incredible, with approximately 150 volunteers turning up to help plant around 3000-4000 native trees, shrubs and ground covers. 2 hours was all it took to plant the trees, an outstanding effort by

Projects and Activities (continued)

A variety of hardy species were planted including Wattles, Acacias, Atriplex and Eremophilas just to name a few.

It was fantastic to see community and corporate groups, mining companies, families and individuals come together to do their bit for the local environment by helping to 'green the gold-fields' and work towards a better environment for the entire community of Kalgoorlie-Boulder.

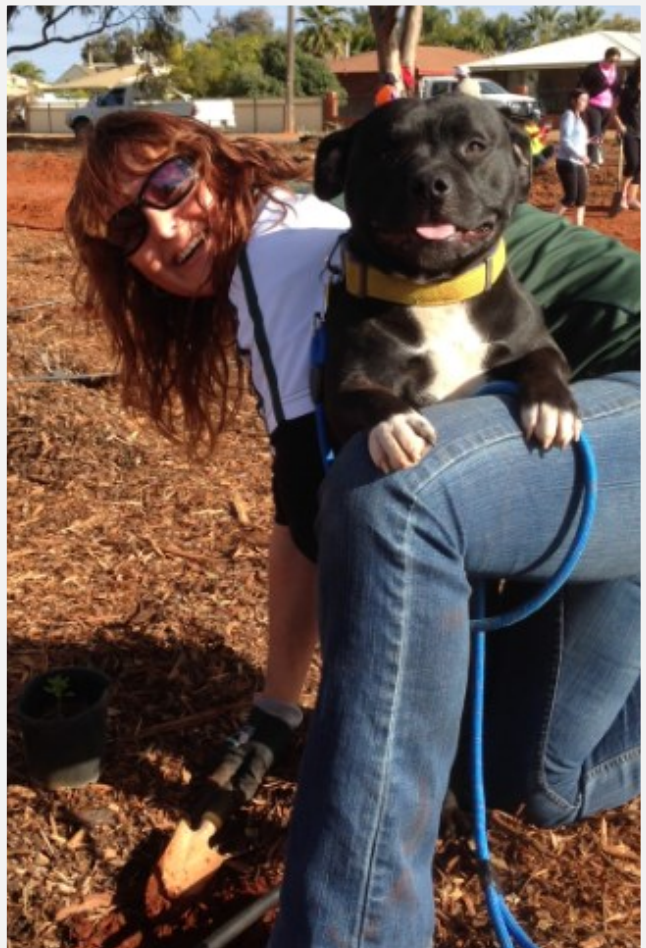
The day would not have been possible without the support and cooperation from corporate, business and community sectors.

Major sponsors City of Kalgoorlie Boulder, KCGM, Northern Star Resources, LandCorp and the Kalgoorlie Miner provided funding for advertising.

The City of Kalgoorlie-Boulder undertook all site works including laying the reticulation, mulching, ripping and on-ground support on the day.

A tremendous amount of behind the scenes work was completed to make the day successful.

KCGM cooked a free sausage sizzle on the day. Families from Orica also came along and distributed free hats—thank you to everyone for your support.



Projects and Activities (continued)

RECONSTRUCTED ART COMPETITION

In November 2013, to coincide with recycling week, KBULG once again coordinated the Reconstructed Recycled Art Competition and Exhibition. The Reconstructed Art competition and exhibition is aimed to improve the community's knowledge and understanding of the concept of resource recovery and the waste cycle. The competition helps to encourage members of the community to source and utilise waste products and materials to create innovative pieces of art and ultimately reduce the amount of waste going to landfill.

In its fourth year the competition was open to all members of the community. Winners of the competition were determined by independent volunteer judges from art and waste management backgrounds. Generous prizes were awarded to those who best fulfilled the following criteria:

- Demonstrated the concept of resource recovery/turning waste into a resource through the use of recovered waste products and materials;

- Artistic quality;
- Creativity and aesthetic merit;
- Craftsmanship and quality of work; and
- Function and innovation.

Entry to the exhibition was free to the public and with more than 5000 visitors attending over 4 weeks, the exhibition created an opportunity for the entire community to be exposed to substantial examples of the waste-to-resource concept. The opening of the exhibition and presentation ceremony was held on November 15th, which attracted in excess of 180 people. Educational information promoting the Reduce-Reuse-Recycle message was displayed on the opening night and for the duration of the exhibition.

Major sponsors included KCGM, and the Kalgoorlie Miner. Also KBULG Core Sponsors were City of Kalgoorlie-Boulder, Barrick Kanowna Belle, Western Power and LandCorp.



Projects and Activities (continued)

KARLKURLA COMMUNITY NURSERY

The Karlkurla Community Nursery underwent a major expansion in 2009 thanks to funding received from the Royalties for Regions Goldfields-Esperance Grants Scheme. The funding provided the nursery with a new holding yard, fencing, shade cloth and three hot houses. Since this time, offshoot projects from this funding continued.

The community nursery has had the opportunity to host work for Centrelink and work experience projects in conjunction with Skill Hire and Max Employment. Also with community organisations including Goldfields Individual Family Support Services.

We envisage the nursery will produce over 60,000 plants again this coming financial year for the community of the Goldfields.

The Nursery is open Mon-Fri 9am-12pm.



- Propagate a diverse range of indigenous plants, tolerant to harsh soil and climatic conditions experienced within the Goldfields Region.
- Increase social and environmental values within the Goldfields.
- Grow and supply plants for bushland restoration/regeneration within the Goldfields.
- Promote the use of indigenous plant species.
- Encourage the adoption of "Water Wise Gardening".
- Raise community awareness of biodiversity, conservation and environmental sustainability initiatives.
- Provide opportunities for volunteers, long term unemployed, the disadvantaged.
- Provide support to other organisations.
- Provide a meaningful and safe place for students, community members and volunteers.

Plant propagation by the group enables KBULG to donate thousands of plants each year to local schools and community groups to be used for creating native gardens in and around the City of Kalgoorlie-Boulder. In the last year KBULG have donated over 25,000 plants to schools, community groups and the General Community.

NATIVE PLANT GROUP

The Native Plant Group was established in late 2004 to cater for the people in the community wishing to learn more about Kalgoorlie's unique flora. The aim of the Native Plant Group is to:



Projects and Activities (continued)



RIP it out NOW! Before it RIPS INTO YOU!

CALTROP is taking over our City! We need your HELP.

CALTROP is a nasty, ground covering noxious weed with yellow flowers that produce seeds with very prickly spines. Known to attack the innocent feet of adults, children and pets alike.

Approach with caution, be sure to have well equipped weaponry such as gloves and a shovel. Completely remove, collect & bag all roots, plants & seed material to prevent escape. Place sealed bag into your green wheelie bin.

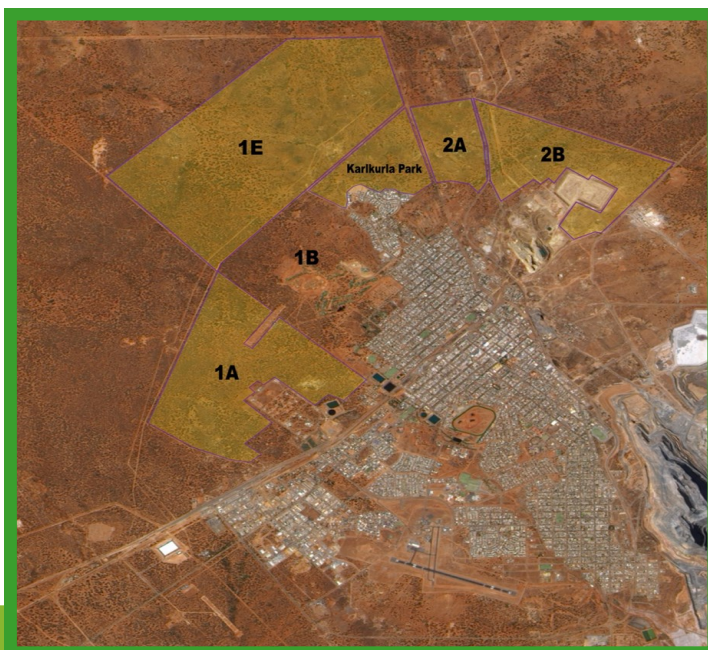




www.kbulg.org.au

ANNUAL CALTROP WEED EDUCATION

Throughout much of this reporting period, weeds have played a major part in community education activities. KBULG ran a comprehensive caltrop weed campaign over March, April and May 2013, this was achieved with promotion in the Kalgoorlie Miner and local radio stations in collaboration with the City of Kalgoorlie-Boulder's annual weed spraying program. KBULG in partnership with Goldfields Nullarbor Rangelands Biosecurity Association (GNRBA) conducted a Caltrop eradication competition in April. The winner received an iPad Air.



REGENERATION ZONE MANAGEMENT

A series of fenced Regeneration Zones encompassing an area of approximately 3,500 hectares form a 'green belt' around Kalgoorlie-Boulder. These Regeneration Zones were established by KBULG's predecessor, the Goldfields Dust Abatement Committee, with the aim of controlling the dust storms of the early 1970's. The now developed Karlkurla Park was one of the original Regeneration zones. The Regeneration Zones are still managed by KBULG today.

The Regeneration Zones are mostly remnant native bushland in close proximity to the City. KBULG encourages the community to use the zones for passive recreation. Many members of the community are keen to see these areas preserved as they enjoy their walks in the local bush close to their home.

Unique flora is found in the zones including several different types of Eremophila, some of which have very restricted distribution.

Projects and Activities (continued)

Off road vehicles are a constant threat in the Regeneration Zones and illegal Woodcutting, dirt bike riding and rubbish dumping are also major management issues which constantly need to be addressed. Some of the Regeneration Zones have been taken up for urban development as the City expands, however, KBULG is working with the City of Kalgoorlie-Boulder and planners in recommending which areas are of the highest conservation value and should be preserved.

The regeneration zones have been extensively mapped. A record of the areas where fencing has been replaced has been kept. We have now started to identify patterns of problem areas. In addition fence lines were established, to replace damaged ones by KBULG committee member Graham Campbell due to damage caused by vandalism.

KBULG received \$30,000.00 in state government funding in 2010 for the conservation of the Regeneration Zones and has spent a considerable amount of time since then fixing damaged areas of fence line.

KARLKURLA BUSHLAND PARK

Karlkurla Bushland Park is 200 hectares of natural regrowth bushland co-managed by KBULG and the City of Kalgoorlie Boulder. The park restoration project was undertaken by KBULG from 1999 to 2002, to provide environmental, educational and recreational opportunities for local residents and visitors alike. The Karlkurla Bushland Park was officially handed over to the City of Kalgoorlie-Boulder in 2002, however KBULG still works closely with council to manage and

maintain the park.

This Park is now a prominent and unique natural recreation area, environmental education and nature based tourism resource for the city. Karlkurla Bushland Park showcases a variety of vegetation including some flora unique to the goldfields region.

KBULG continues to promote the Native Plant Guide, which details the Goldfields species found in the park and produces a self guided walk pamphlet.

KBULG regularly conducts guided bushland walks in the park for local Junior Landcare students, visiting Camp School students, interested groups and community members, providing education and understanding about our unique area. KBULG is in the process of implementing, interpretive and directional signage in the Park.



Projects and Activities (continued)

KARLKURLA DREAMING CULTURE TRAIL

As part of the Heart of Gold Festival and as part of NADOC week, KBULG in conjunction with local indigenous Guides lead groups of community participants and tourists on a Dreaming Cultural Trail through Karlkurla Bushland Park.

Attendees learnt about the native flora and fauna, bush medicines, bush tucker, historical events and Dreamtime stories. Silky Pear seeds were given out so everyone could participate in the Park's local tradition of "Scatter the Silky Pear" and everyone was able to take home a Native Plant seedling. We also had spear throwing for the men that participated in the bush walk.

At the end of the tour, everyone enjoyed beautiful camp oven damper with quongdong jam and billy tea.

The event was a great success, feedback from participants was extremely positive.



Chairperson's Report 2013—2014

Thank you to our wonderful staff and volunteers for your part in the very successful year for Kalgoorlie-Boulder Urban Landcare Group.

The community tree planting day was very successful, continuing on from last year's planting. This area looks wonderful and will continue to improve as this year's planting grows.

The Sustainable Garden Quest, the Spring Festival, Kids Fest and the Reconstructed Recycled Art Competition were very successful events attended or run by KBULG. It is encouraging to see the community get behind all of these events.

I would like to thank the staff and volunteers who have worked very hard to get the Nursery looking wonderful. Our staff CEO, Kim has worked tirelessly on getting new sponsorships, new networks and new connections, Anjali has been wonderful in her job and has also jumped up to work in the Park and the Nursery and other events as required. Jan is the new Nursery assistant who has recently come into the organisation, welcome. Brenden has been working with KBULG for a few months and with his assistant is a valuable staff member of the organisation. I would like to thank Robert and Lisa who have gone onto new things for the work they put into the organisation, and wish them all the best for their future endeavours.

My thanks go to the Executive Committee of Rod and Jim for the effort they put attending the numerous meetings we had. Also to the rest of the management committee, who make time to assist in the management of the organisation. And last but not least, all the staff and volunteers who help make Kalgoorlie-Boulder a great place to live.

I am proud of the work which KBULG does and I'm looking forward to another busy and successful year.

Peta Osborne



Conclusion

KBULG's vision is to work for a *better environment and better lifestyle* for the people of the Goldfields by encouraging *communication, education and participation*.

The group aims to involve the community in all its activities and is committed to working with other community groups, schools, business and government to achieve its goals.

The Kalgoorlie-Boulder Urban Landcare Group, previously the Goldfields Dust Abatement Committee, has conserved and established native vegetation in the Gold-

fields for over 40 years. Due to past, present and future impacts and threats to the Kalgoorlie-Boulder environment, planning and promoting our activities and the need for conservation and rehabilitation of the Goldfields environment is given high priority.

KBULG has achieved all aims, objectives and outcomes over this reporting period and are committed to continuing to serve the Goldfields Community and its environment. Once again a very big thank you to all of our sponsors, supporters, staff committee and members.



Financial Report

Kalgoorlie Boulder Urban Landcare Group Inc Independent Auditor's Report

Scope

We have audited the financial report for the financial year ended 30 June 2014 of Kalgoorlie Boulder Urban Landcare Group Inc who is responsible for the financial report. We have conducted an independent audit of the financial report in order to express an opinion on them to Kalgoorlie Boulder Urban Landcare Group Inc.

Our audit has been conducted in accordance with Australian Auditing Standards to provide reasonable assurance whether the financial report is free of material misstatement. Our procedures included examination, on a test basis, of evidence supporting the amounts and other disclosures in the financial report, and the evaluation of accounting policies and significant accounting estimates. These procedures have been undertaken to form an opinion as to whether, in all material respects, the financial report is presented fairly in accordance with Accounting Standards and other mandatory professional reporting requirements so as to present a view which is consistent with our understanding of the business's financial position, the results of its operations and its cash flows. An adjustment to the accounts was required to clear Creditors in MYOB. Also in the 2013 Audit an amount was received from KCGM in error.

The audit opinion expressed in this report has been formed on the above basis.

Audit opinion

In our opinion, the financial report presents fairly in accordance with applicable Accounting Standards and other mandatory professional reporting requirements the financial position of Kalgoorlie Boulder Urban Landcare Group Inc as at 30 June 2014, and the results of its operations and its cash flows for the year then ended.

Signed on : 11 August 2014


P A LEIGHTON FCA

Kalgoorlie Boulder Urban Landcare Group Inc
Detailed Income and Expenditure Statement
For the year ended 30 June 2014

	2014 \$	2013 \$
Income		
Environmental Community Grant	-	20,000
Grant - Dept Of Sustainability	-	19,900
City Kalgoorlie-Boulder	75,000	79,515
KCGM	20,000	20,000
Western Power	15,000	15,000
Barrick Kanowna	-	20,000
Landcorp	5,000	5,000
Skill Hire - WEX	4,545	-
Northern Star Resources	5,000	-
Membership	220	-
Junior Landcare	100	95
Plant Sales	11,972	21,493
Native Plant Books	1,249	-
Other Book Sales	159	-
Karlkurla Park - Bushwalks	5,965	3,120
Karlkurla Park Maintenance	32,383	15,167
Rangeland NRM Sponsorship	10,000	12,000
Scatter Silky Pear	50	91
Interest received	2,000	4,860
Sponsorship Other Event	3,000	-
Waste Authority Grant 2012	-	9,700
Other income	14,876	1,007
Adjustment To Accounts	15,175	-
Award Prize Money	1,818	-
Boulder Markets	101	-
City Kalgoorlie Boulder - Water	-	32,154
City Kalgoorlie Boulder - Water	-	(32,154)
Total income	<u>223,613</u>	<u>246,949</u>
Expenses		
Nursery Officers Wages	54,204	33,401
Nursery Officers Superannuation	5,014	3,006
EO Salary	38,461	32,504
EO Superannuation	3,558	2,856
Adjustment To Audit	-	1,371
CEO Salary	67,294	81,215

The accompanying notes form part of these financial statements.

Kalgoorlie Boulder Urban Landcare Group Inc
Detailed Income and Expenditure Statement
For the year ended 30 June 2014

	2014 \$	2013 \$
CEO Superannuation	6,225	7,391
Prov'n For Employee Entitlements	(976)	(5,138)
Workers Compensation	942	1,291
Nursery Assistant Wages	2,880	9,479
Superannuation	228	835
Vehicle Repairs Etc	-	118
Vehicle Fuel	457	1,374
Phone, Fax & Internet	2,486	8,774
Printing & Stationery	715	832
Photocopy	1,243	1,375
Computer Maintenance & Software	168	1,569
Audit/Accountancy	1,600	1,480
Meetings	134	806
Newsletter	13,413	5,751
Gifts	-	23
Book Purchases	29	2,080
Karkurla Signage	-	14,271
Uniform	295	196
Training	3,345	-
Promotions/Displays	182	4,450
Other Employer Expenses	-	44
Bank Charges	132	61
Office Furniture	350	4,050
Reconstructed Art Comp	2,608	3,710
Special Events	6,570	13,238
Tree Planting Day	361	1,269
Nursery	1,780	3,290
Waterwise Garden Comp	-	695
Freight	-	635
Clean Up Australia Day	-	84
Depreciation	6,537	7,022
Equipment - Computers	-	949
Fines	-	60
Plants/Nursery Expenses	2,541	1,072
Junior Landcare	-	8
Insurance - Voluntary Workers	-	318
Insurance - Motor Vehicle	1,101	1,153
Insurance - Other	345	-
Propagating Materials	-	713

The accompanying notes form part of these financial statements.

Kalgoorlie Boulder Urban Landcare Group Inc
Detailed Income and Expenditure Statement
For the year ended 30 June 2014

	2014 \$	2013 \$
M/Vehicle - Registration/Insurance	379	103
M/Vehicle - Other	2,619	226
Postage	88	104
Office Consumables	2,606	521
Rent Expenses	272	5,010
Repairs & maintenance	313	425
Subscriptions	182	126
Sundry expenses	41	1,036
Worm Purchases	-	3,000
Total expenses	<u>230,721</u>	<u>260,233</u>
Net Income over Expenditure	<u>(7,108)</u>	<u>(13,284)</u>

The accompanying notes form part of these financial statements.

Kalgoorlie Boulder Urban Landcare Group Inc
Detailed Statement of Financial Position as at 30 June 2014

	Note	2014 \$	2013 \$
<hr/>			
Accumulated Funds			
Opening balance		96,641	109,925
Net Income over Expenditure		(7,108)	(13,284)
Total Accumulated Funds		<u>89,533</u>	<u>96,641</u>
Represented by:			
Current Assets			
Cash Assets			
Cash At Bank - 14 4731		9,349	2,860
Maxi-Direct Account		75,557	95,056
Cash At Bank - 2504		969	3,641
		<u>85,875</u>	<u>101,557</u>
Total Current Assets		<u>85,875</u>	<u>101,557</u>
Non-Current Assets			
Property, Plant and Equipment			
Motor vehicles - at cost		36,704	36,704
Less: Accumulated depreciation		(14,186)	(7,649)
		<u>22,518</u>	<u>29,055</u>
Total Non-Current Assets		<u>22,518</u>	<u>29,055</u>
Total Assets		<u>108,393</u>	<u>130,612</u>

The accompanying notes form part of these financial statements.

Kalgoorlie Boulder Urban Landcare Group Inc
Detailed Statement of Financial Position as at 30 June 2014

	Note	2014 \$	2013 \$
Current Liabilities			
Payables			
Trade Creditors		-	15,175
		-	15,175
Current Tax Liabilities			
GST Payable Control Account		5,338	2
Input tax credit control account		(719)	(18)
PAYG Withheld		4,654	7,482
Superannuation Payable		3,413	4,180
		12,686	11,646
Provisions			
Annual Leave Provision		6,174	7,150
		6,174	7,150
Total Current Liabilities		18,860	33,971
Total Liabilities		18,860	33,971
Net Assets		89,533	96,641

The accompanying notes form part of these financial statements.

2013-2014

Promotional Posters





NATIVE PLANT GROUP

1st Sunday of each month

9:00am Start —11:00am

KBULG Nursery, Karlkurla Park

Entrance from small car park on Tumbarri Way

**Come along and learn how to
propagate local native plants. No
experience necessary,
everyone is welcome!**



Kalgoorlie-Boulder Tree Planting Day

Don't forget to
wear gloves and
bring a trowel!

Free
Sausage
Sizzle

Meet at the Community Park

Cnr of Altham St & Sewell Drive

Saturday 20 July
09am - 11am



www.kbulg.org.au
admin@kbulg.org.au
Ph: 0418935498

PLANET ARK



Kalgoorlie Miner



BARRICK
KANOWNA





Kalgoorlie Miner



Kalgoorlie-Boulder Sustainable Garden Quest

ENTER NOW! For your chance to WIN
Great PRIZES - Mulch & your share in over
\$1500 to spend at Bergie's Soils.

CATEGORIES

Residential

Owner Maintained / Tenant Maintained

Community

Schools / Community Organisations

Commercial/ industrial

Business and Industry

Edible garden (vegetable/fruit/bush tucker

Sub categories: Residential/ Community

This year's competition is focussed on all aspects of creating and maintaining a sustainable garden, the overall appearance, colour and tidiness of gardens and verges. Front gardens, which can be seen from the verge, will be judged. Edible Gardens is a separate category, with a specific judging day to include backyards (date yet to be confirmed).

For entry forms and judging criteria please email
admin@kbulg.com.au or visit Lotteries House, Bergie's Soils or the
Kalgoorlie Miner.

Entries Close 19/09/2013
Winners Announced 05/10/2013



Department of
Environment and Conservation
Our environment, our future



CARING
FOR
OUR
COUNTRY



REDUCE - REUSE - RECYCLE

reconstructed

RECYCLED ART COMPETITION

THEME = 'IN MY GARDEN'



- 3D Sculpture, Mixed Media \$300 Cash Prize
- 3D Sculpture / Functional \$300 Cash Prize
- 3D Sculpture / Wearable \$300 Cash Prize
- 2D Posters, Painting, Collage \$300 Cash Prize
- Junior Individual (12 and Under) \$100 Cash Prize
- Youth Individual (13 +) \$200 Cash Prize
- Primary School Class Entry \$250 Vouchers
- High School Class Entry \$250 Vouchers
- Community Group \$250 Cash Prize / Vouchers
- Peoples Choice Award \$200 Cash Prize



ENTRY DETAILS

Kalgoorlie Miner

Entry forms and conditions are available from the Kalgoorlie Miner, the Goldfields Arts Centre, Fossick Homemade, Lotteries House, visit www.kbulg.org.au and click on events to download the form OR email admin@kbulg.org.au.

Entry forms and artwork must be submitted by Monday the 11th of November and be delivered to the Goldfields Arts Centre between 2pm and 6pm. \$ 10.00 Entry fee:-)



**Exhibition - Friday 15th November 2013
at the Goldfields Arts Centre**

For more info contact KBULG on 0418935498 or admin@kbulg.org.au





Kalgoorlie-Boulder Clean Up Day In June

Just 1
Piece of rubbish can
make a difference!

9am - 11am
Sunday 15th June

Meet At Hannans Boulevard Shopping Centre Car Park

Registration will be set up at the head frame

(Please bring your gloves, hat, sunscreen and waterbottle)

SAUSAGE SIZZLE AFTERWARDS AND PRIZES TO BE WON!



Harvey Norman



For further information please contact KBULG on 0418935498 or admin@kbulg.org.au



Heart of Gold
FESTIVAL

Karlkurla Dreaming

Culture Trail

9:00am - Saturday 24th May

Karlkurla Bushland Park

Main Carpark

Paddington Drive, Hannans

Experience the Karlkurla Bushland Park with local Indigenous & KBULG guides. Learn about native flora & fauna, bush medicine, bush tucker, historical events & stories of Dreamtime (approx 2hrs).

Adults \$22

Students/Children \$12

*Tickets are available from the
Goldfields Arts Centre on 9088 6905
For more information contact KBULG on
0418 935 498 or email admin@kbulg.org.au
www.kbulg.com.au*